



STRENGTHENING THE ENABLING ENVIRONMENT FOR WASH

Scaling up PATS in Punjab – Plan International Pakistan

Muhammad Asim Saleem | 4th August 2017



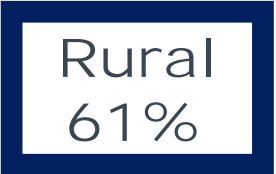
The CS WASH Fund is supported by the Australian Government and managed by Palladium International Pty Ltd.



Fast Facts about Punjab

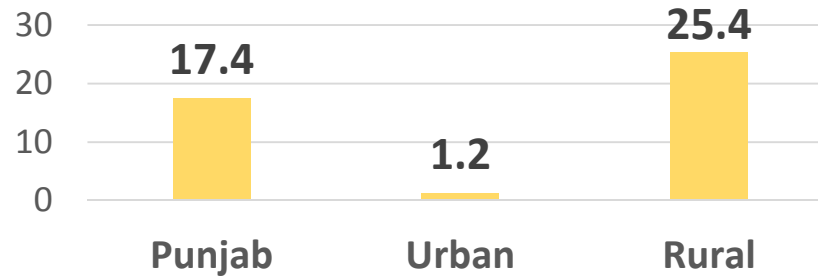
Factual Scenario of Punjab

76	Infant Mortality, per 1000 lives
96	Under Five Mortality, per 1000 lives
17.4%	Incidence of Diarrhea
16%	Incidence of Acute Respiratory Infection (ARI)
33.7%	Under Weight Prevalence
16%	Wasting Prevalence
33.5%	Stunting Prevalence
17%	Open Defecation
40%	Illiteracy 10+ Years

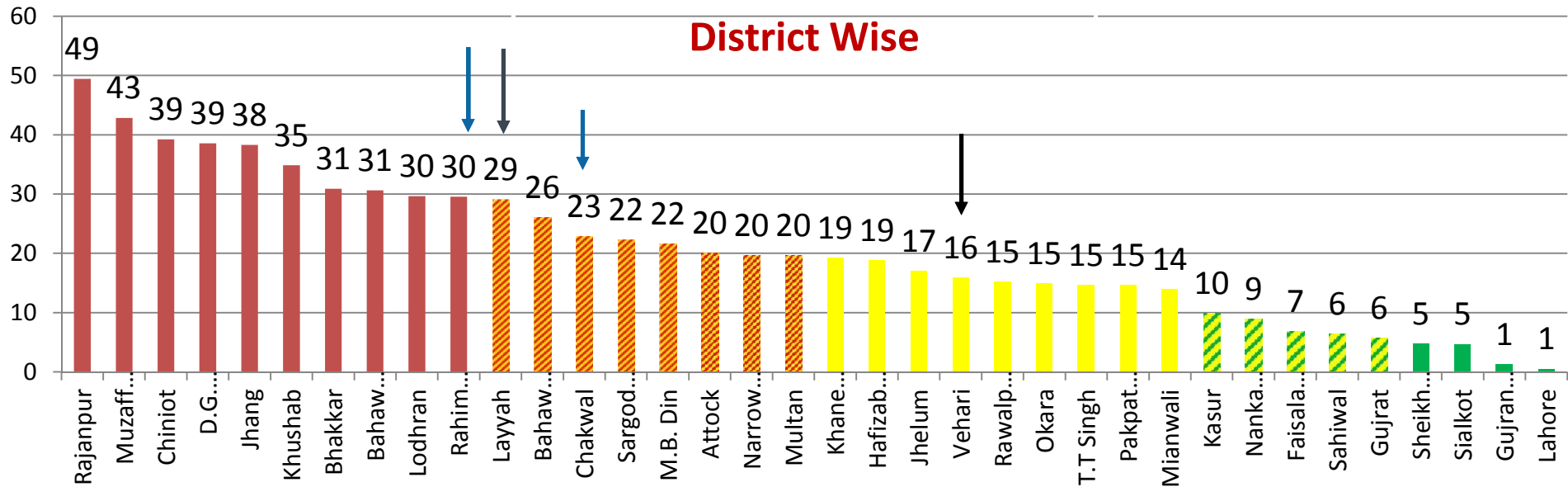


Open Defecation Status (%age)

Provincial

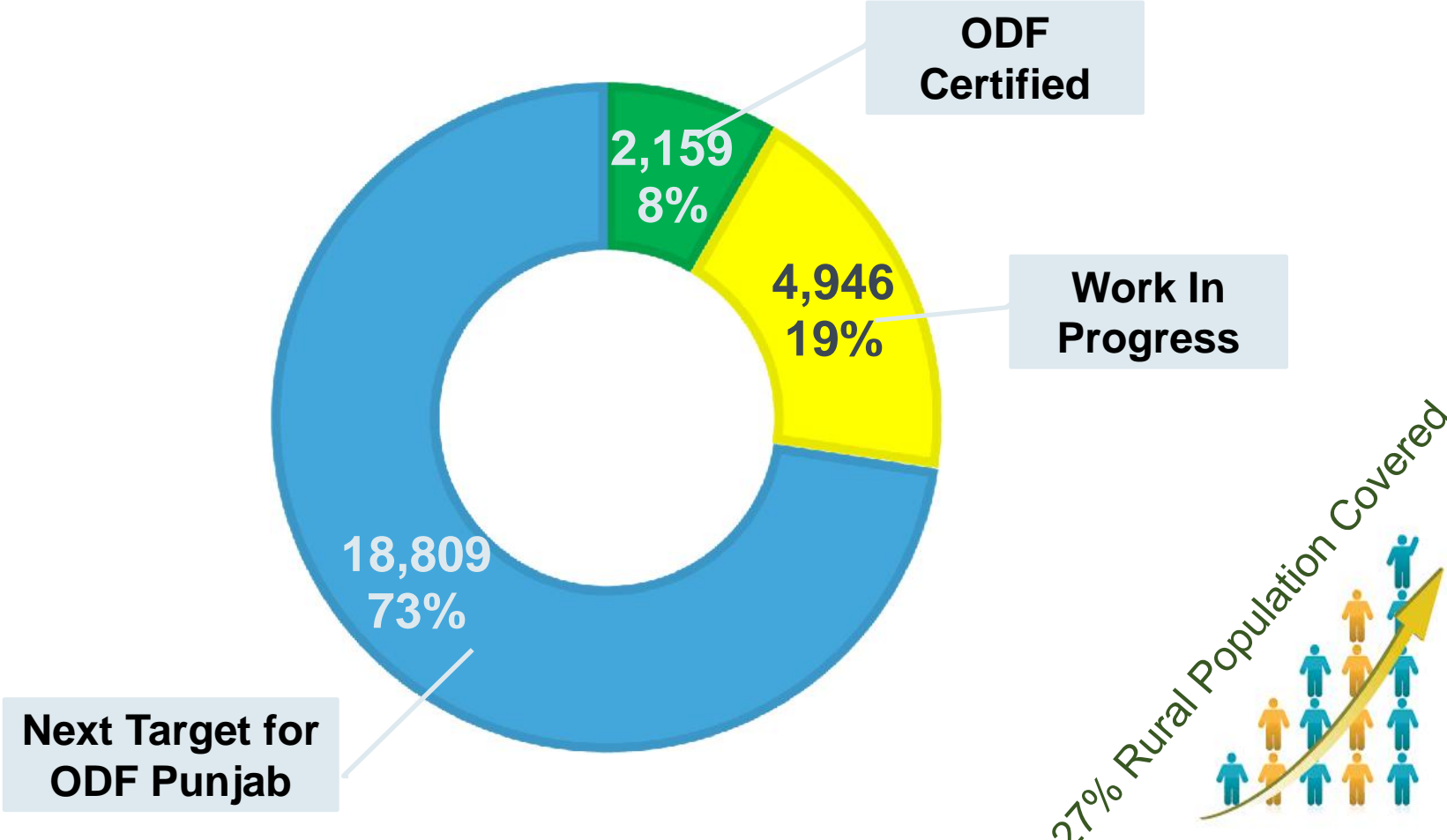


District Wise



Status of Rural Sanitation in Punjab

ODF Villages Coverage in Punjab



What is your CSO working on?

Strengthening the policy environment to support government capacity to take up devolved responsibilities for PATS

Strengthening inter-agency coordination

Focus on behaviour change aspects along side infrastructure components

Creating balance between investments in water supply, sanitation and hygiene

Strengthening service delivery in WASH sector

What approach have you adopted?

Scaling up based on learnings

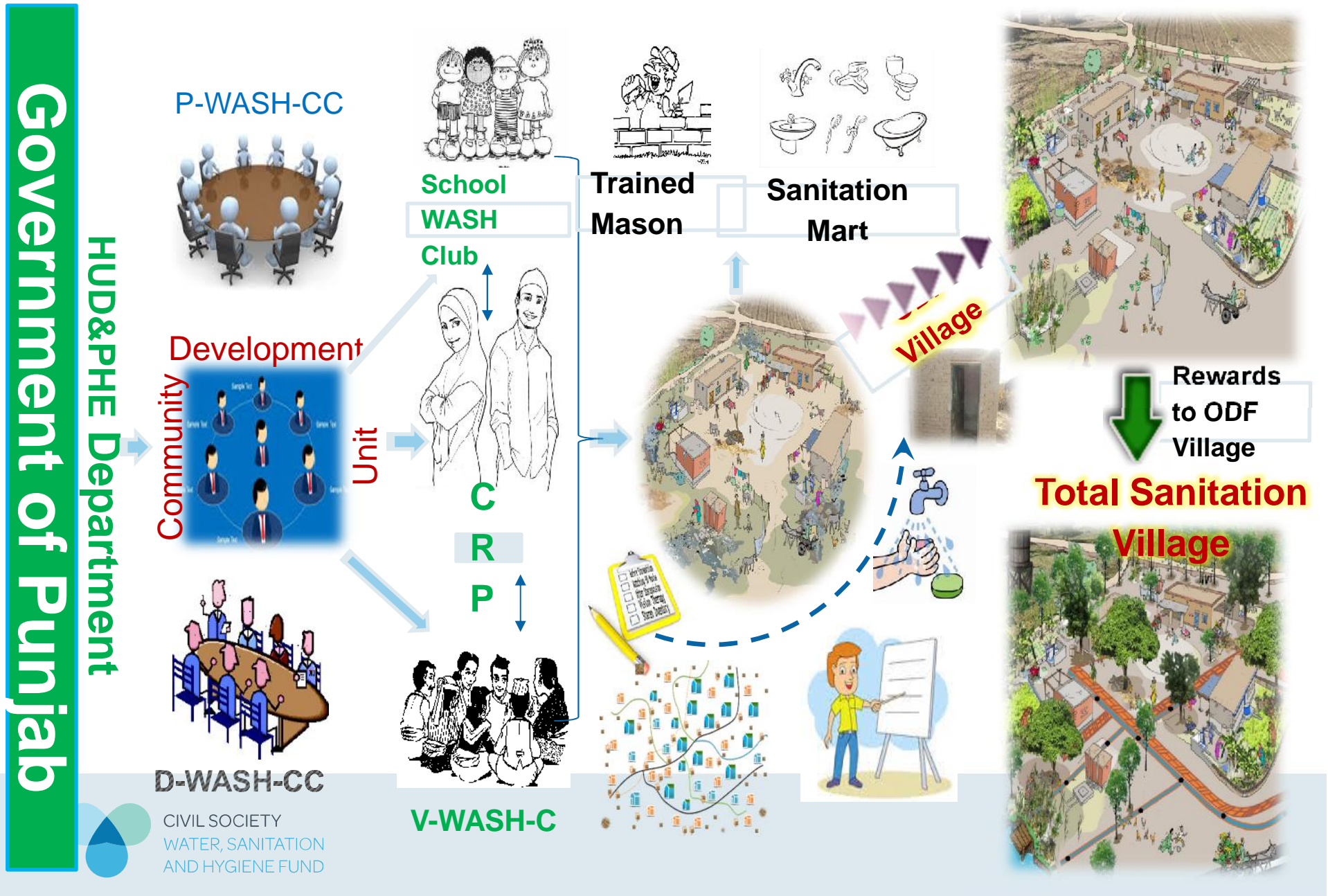
Capacity building of service providers/duty bearers

Working in coordination and collaboration

Trusting in the will and capacities of Public Sector

Working with the Government-Led Approach

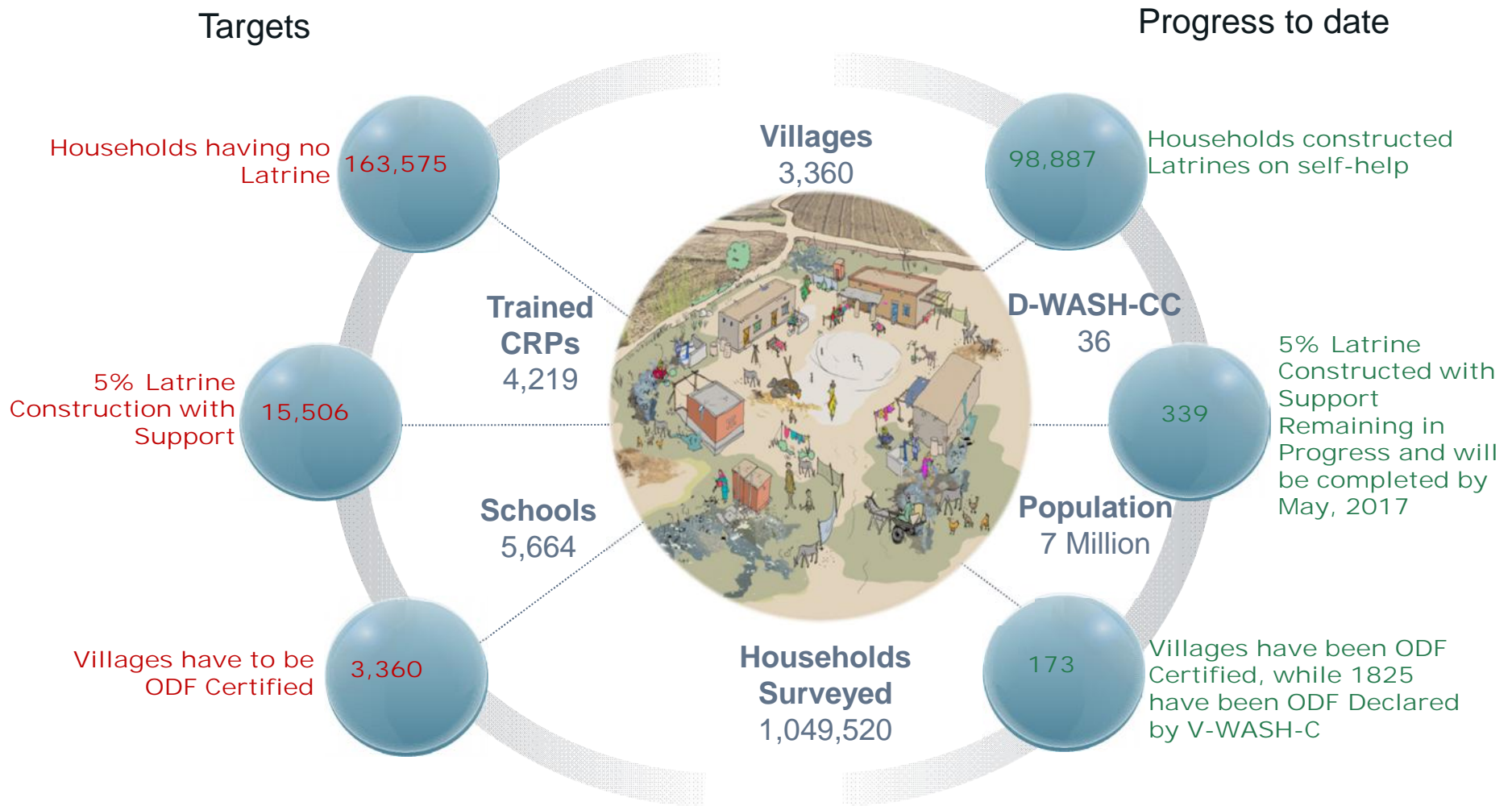
Approach Adopted by the Government of Punjab



How well is your approach working?

- Government Departments are now actively providing WASH services to the communities
- Inter-departmental coordination strengthened and formalized through WASH Coordinating Committees.
- ‘Software’ is built into infrastructure programs
- Government initiated and funded sanitation scale-up program, based on learnings

Approach adopted by the Government



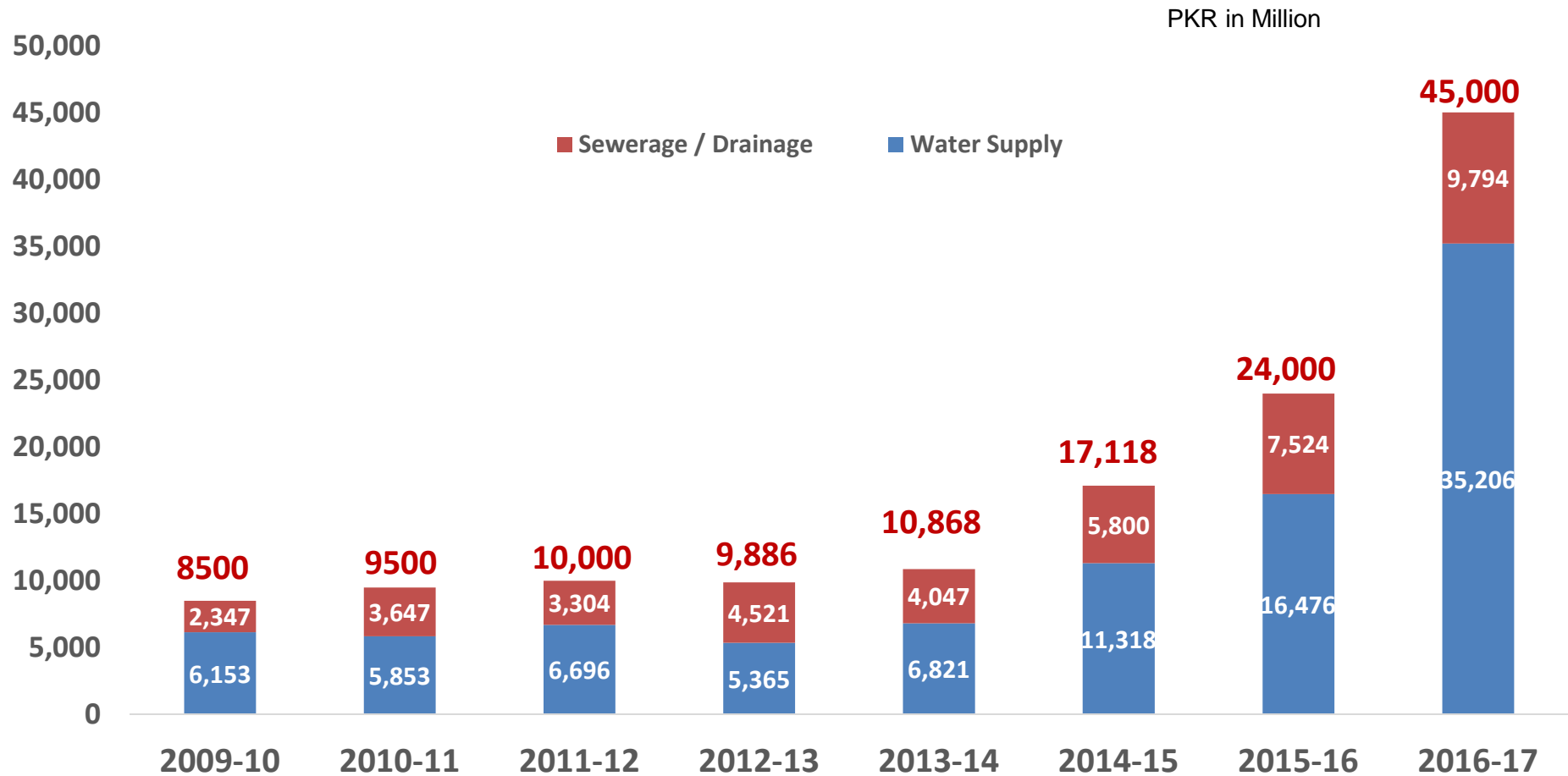
With budget of 400 Million PKR* allocated by the Government of Punjab

What evidence do you have that your approach is working?

- Development and implementation of WASH Road Maps
- Government programs covering at least 50% of villages of Punjab in next 2 years
- Improving government HR capacities
- Implementation of WASH in Schools Strategy
- Periodic mapping of inequities for safe water and sanitation

What evidence do you have that your approach is working?

Funds allocation for Water & Sanitation
ADP Allocation (2009-17)



What advice would you give to others?

Working with government to identify key gaps and using NGO capabilities to address these within government systems

Starting small, not expecting overnight 'success', and building/scaling up as capacity develops

Political buy-in is required to institutionalize integrated WASH programs in public sector plans and budgets

Resource recommendations

- Punjab WASH Sector Development Plan 2014-24
- Punjab Growth Strategy 2018