



Partnership reflections from I&I grant

From Practical to Strategic Changes: Strengthening Gender in WASH

Lee Leong and John Kelleher | Plan Int Australia | 3 August 2017

Acknowledgments

ISF-UTS: Caitlin Leahy, Dr Juliet Willets, Dr Keren Winterford

Centre for Natural Resources and Environmental Studies (CRES): Dr Nghiem Phuong

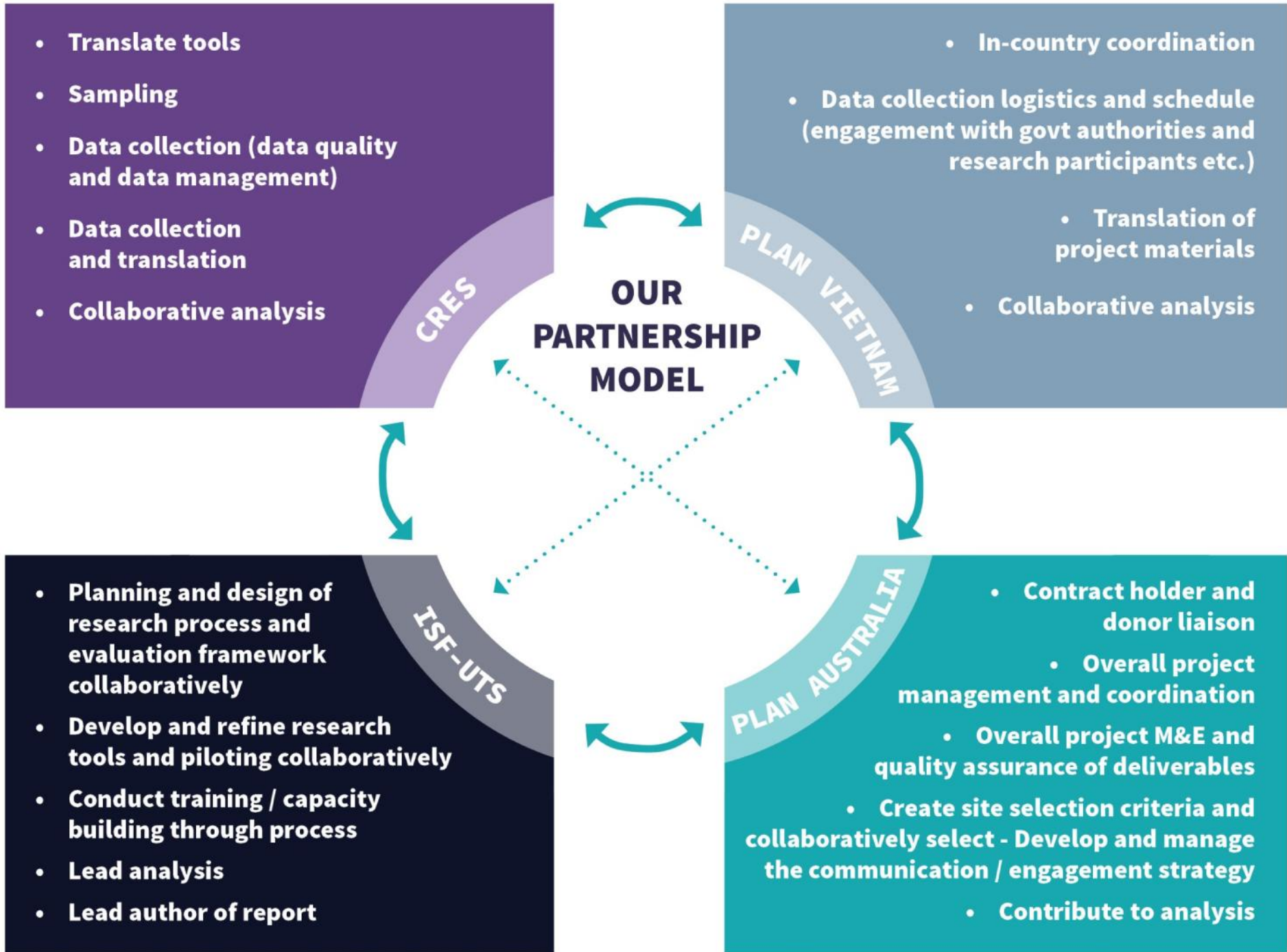
Plan International: Hoa Nguyen, Thuy Anh Vu



The CS WASH Fund is supported by the Australian Government and managed by Palladium International Pty Ltd.

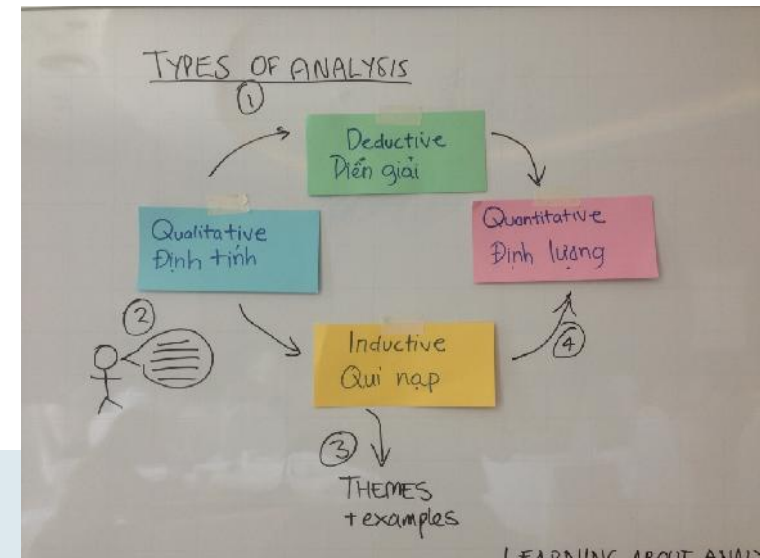
Why partnerships between CSOs and researchers is important

- Practitioners increasingly value rigorous evidence-based research for programming use (e.g. advocacy, grounding approaches)
- CSOs often not able to commit to the level of resources, time, skills needed to undertake high quality research themselves.
- As global issues become more complex, need to collaborate to address these
- Opportunity for capacity building for CSOs (and researchers)



Capacity building in the partnership

- Training and piloting workshop
 - Trained CRES, Plan Vietnam and Government partners in research practice to ensure quality and rigour.
 - Facilitated broader learning to improve qualitative and ethical research practice
 - Applied learning immediately in pilot communities
 - Post-pilot reflection to consolidate learning and introduced analysis skills
- Collaborative analysis workshop
 - Trained in analysis skills and applied immediately to the data
 - Contextualised findings in broader context



Enablers in the Partnership



Built on existing relationships
Funding arrangements
and requirements
Clear roles and
communication
Openness and flexibility
in the partnerships

Challenges/Learning in the partnership



Ceding of decision making
authority
Re-negotiating expectations
Changing personnel
Undefined *mutual*
capacity development

Key takeaway messages

- ✓ Interests and agendas of researcher and practitioners don't need to be completely aligned – through the research process check-in openly about expectations, and surfacing assumptions.
- ✓ Value of modelling positive partnerships
- ✓ Value of capacity building elements in the research process
- ✓ Mutual appreciation of the complementary contribution of CSO-academic partnerships