



# Bringing the Field to the Room: EMW Sanitation Vietnam

Tuyet Pham | Hanh Nguyen | 13 July 2016



The CS WASH Fund is supported by the Australian Government  
and managed by Palladium International Pty Ltd.

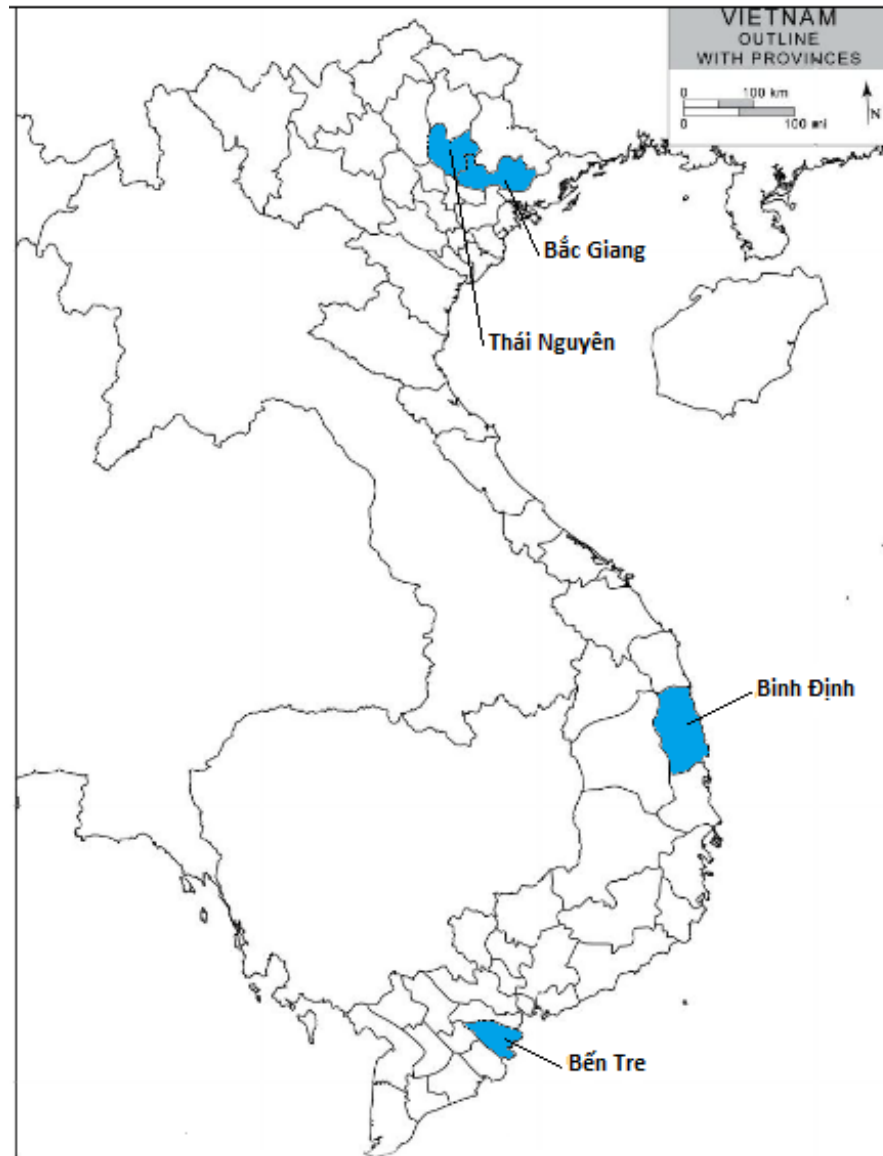
# Water, Sanitation and Hygiene Output-Based Aid (WASHOBA)

## Project objectives

**Policy goal:** scale-up OBA for rural water supply and sanitation through government systems.

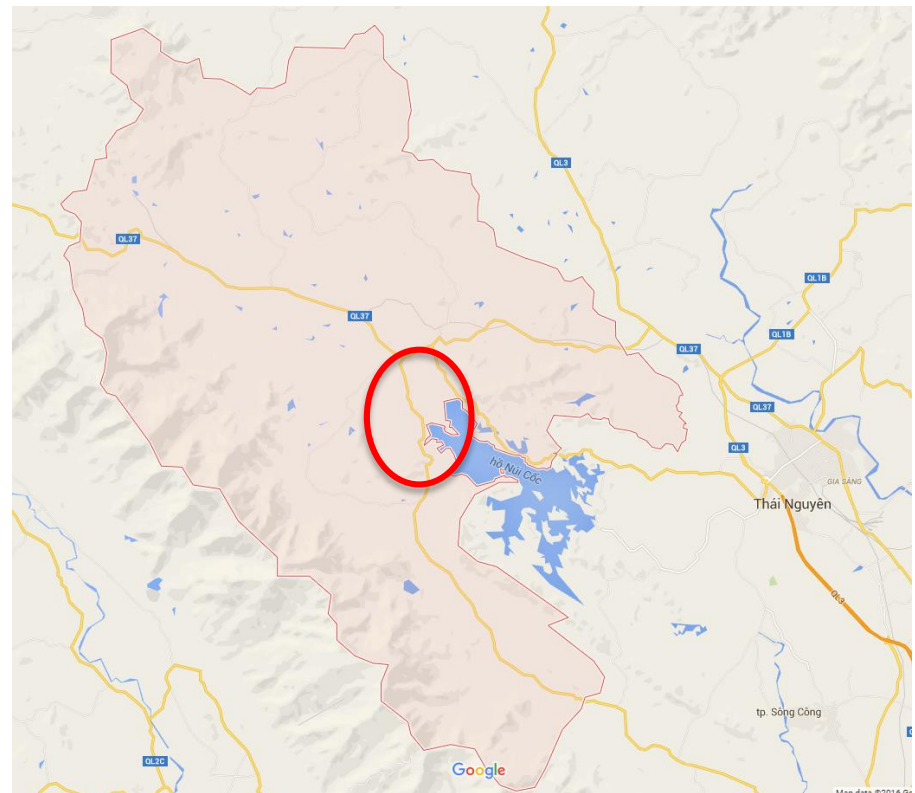
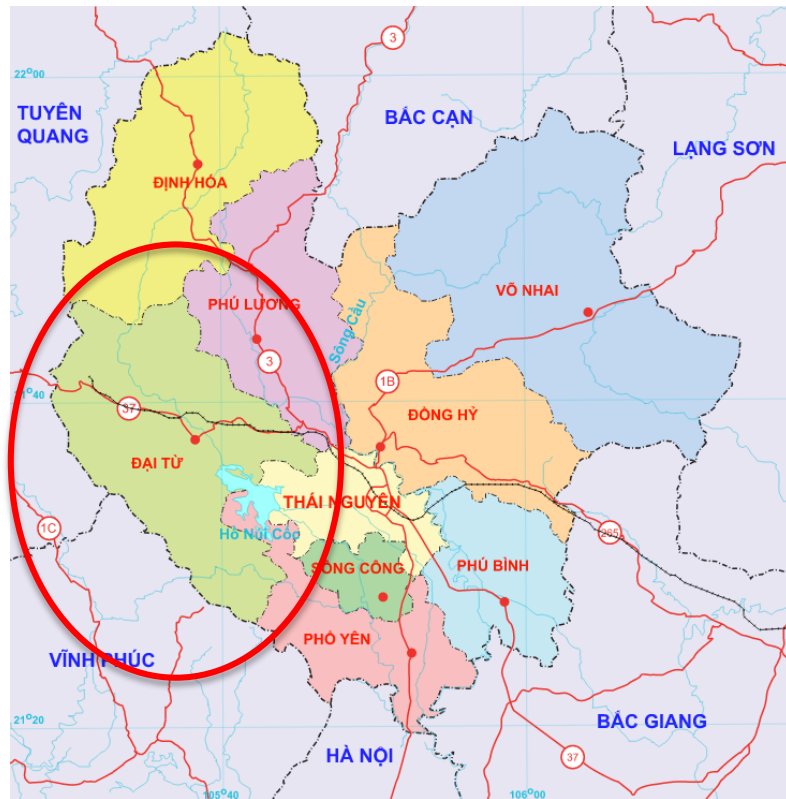
**Latrine Target:** 17,000 latrines built by poor and near poor households. 3,000 latrines built by non-poor households

# Project Provinces

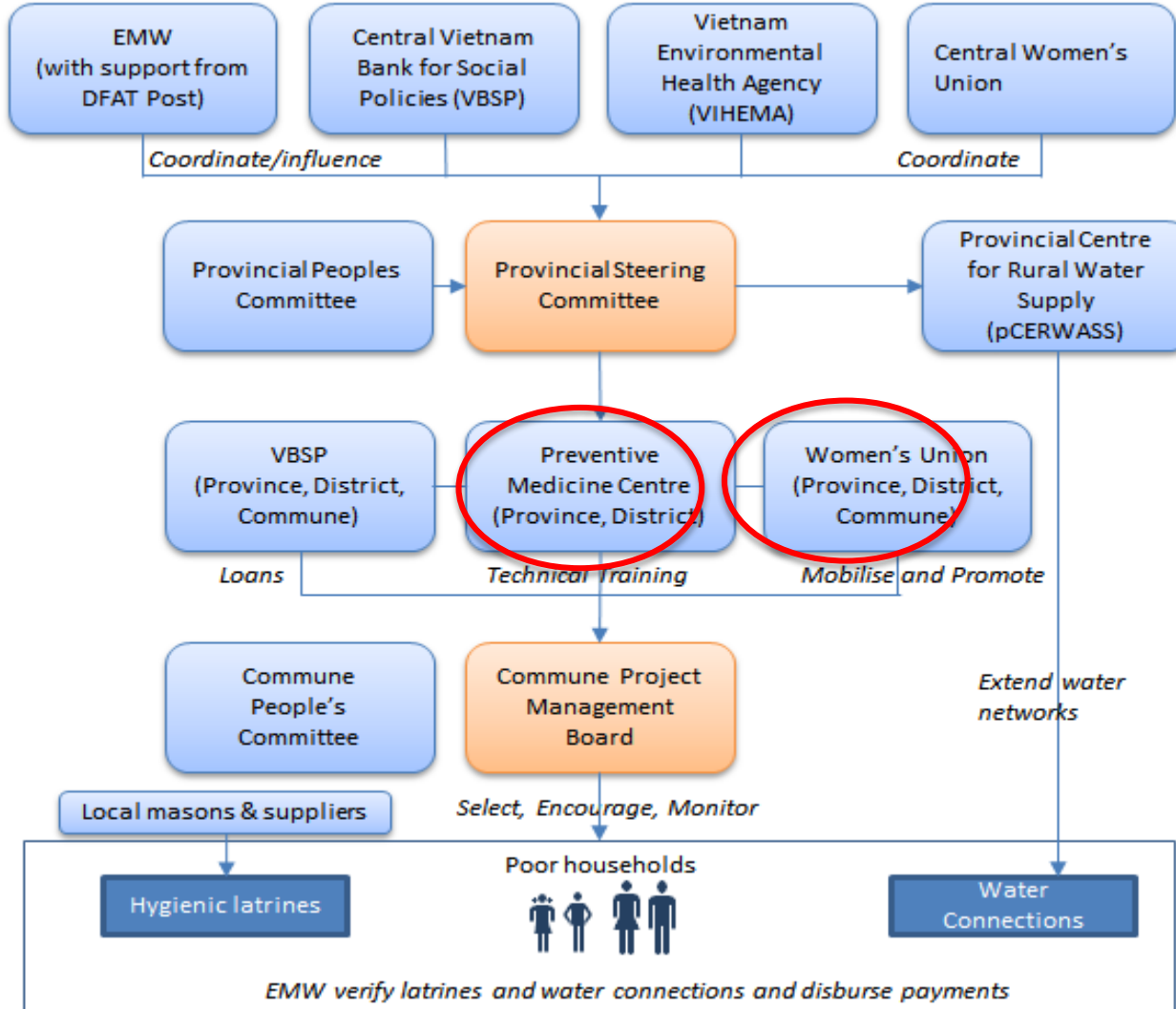


# Project location

*Van Yen Commune, Dai Tu District, Thai Nguyen Province*



# Who do you liaise with to arrange a visit?





# How do you get there?



# Who greets you when you arrive?

Women's Union members and/or Health Sector Workers

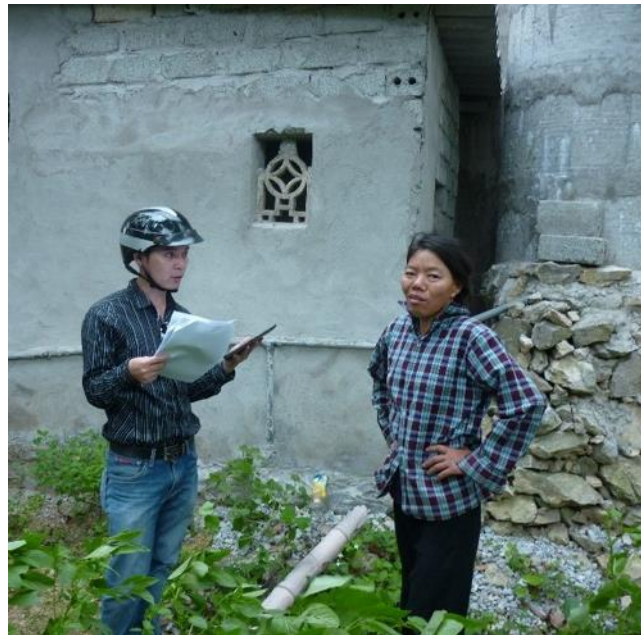


# What do you see/inspect on a site visit?

Latrine moulds  
produced by local  
supplier



Households with  
Completed Latrines



Demonstration  
models of latrines



# Who do you meet on a site visit?

- WASHOBA Project Management Board members
- Health sector staff (Preventative Medicine Centre)
- Vietnam Bank for Social Policy staff
- Latrine Masons/Suppliers
- Commune People's Committee
- Provincial People's Committee members



# What do you do on a site visit?



# What do you do on a site visit?



# Any particular challenges facing the project in this location?

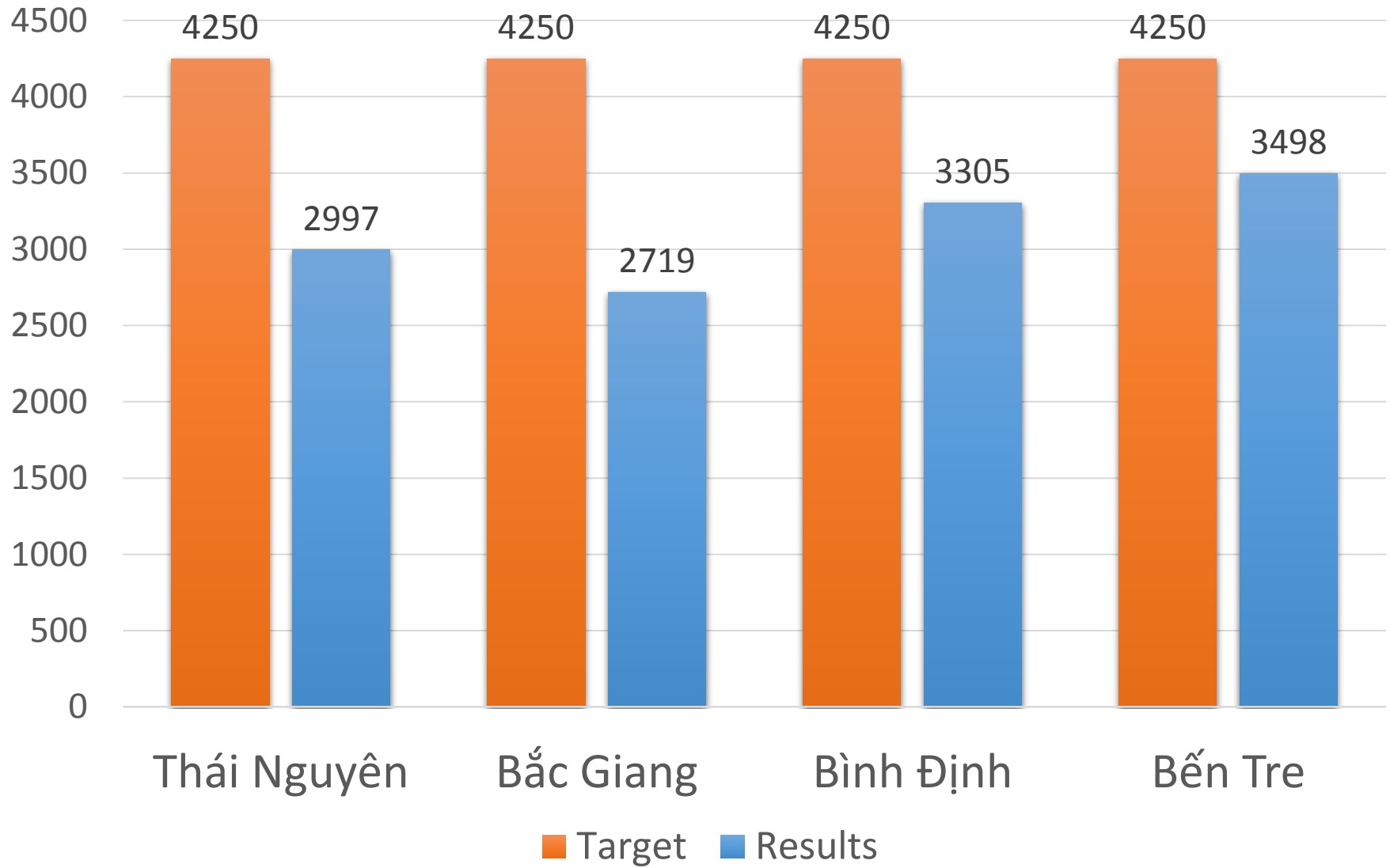


- Geographical & Economic difficulties
- Road access
- 35% population are ethnic minority (Tay, Nung, San Chi, Dao etc.)
- Habit of using unhygienic latrines and low awareness

# Success to Highlight: Mobile Team Initiative



# RESULTS AS OF JUNE 2016



# Percentage of poor households having hygienic latrines

