



Strengthening the enabling environment: Fund-wide data & trends

MERP

Bruce Bailey | Paul Crawford | Paul Tyndale-Biscoe

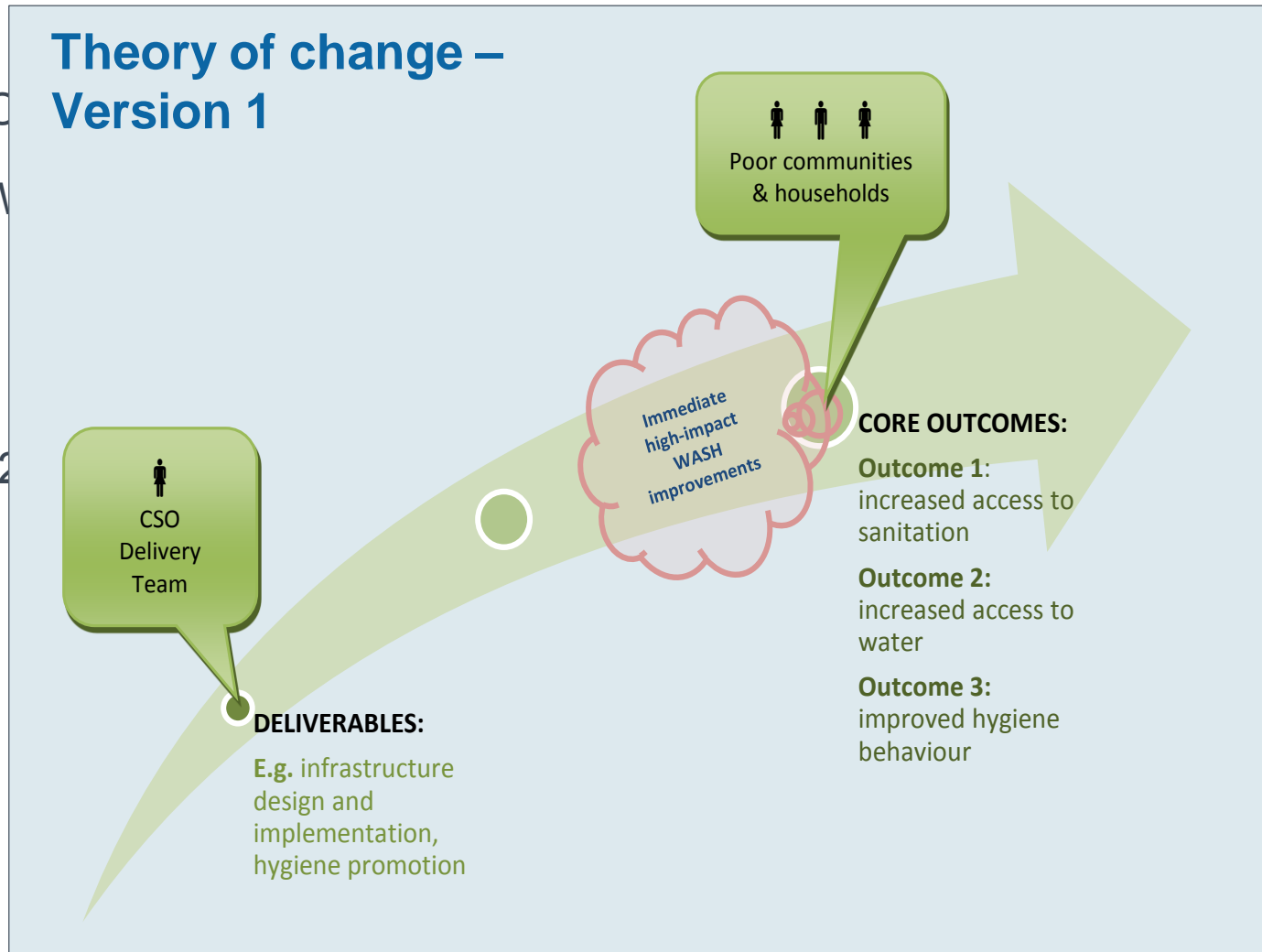
Key messages

- CSOs have responded to recommendations to focus on strengthening the **enabling environment**
- Focus has been on **government Change Agents** (especially sub-national)
- WASH **strategy** should be appropriately aligned with **context**
- ‘Strengthening’ has mostly involved training, but could explore more sophisticated methods to address **resourcing and system constraints**



Once upon a time...

- CSO
- CS V
- 2012

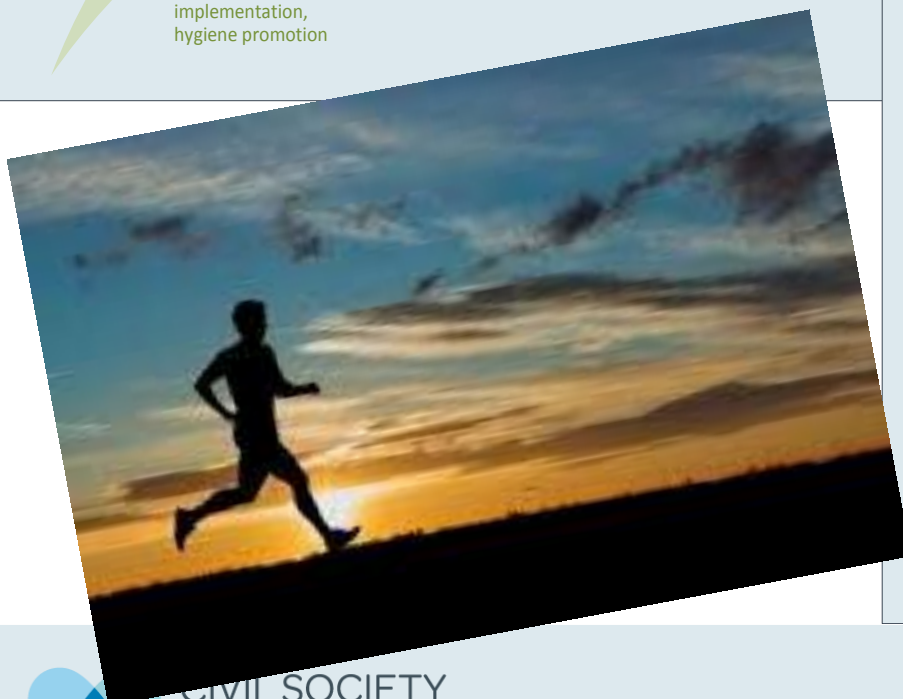
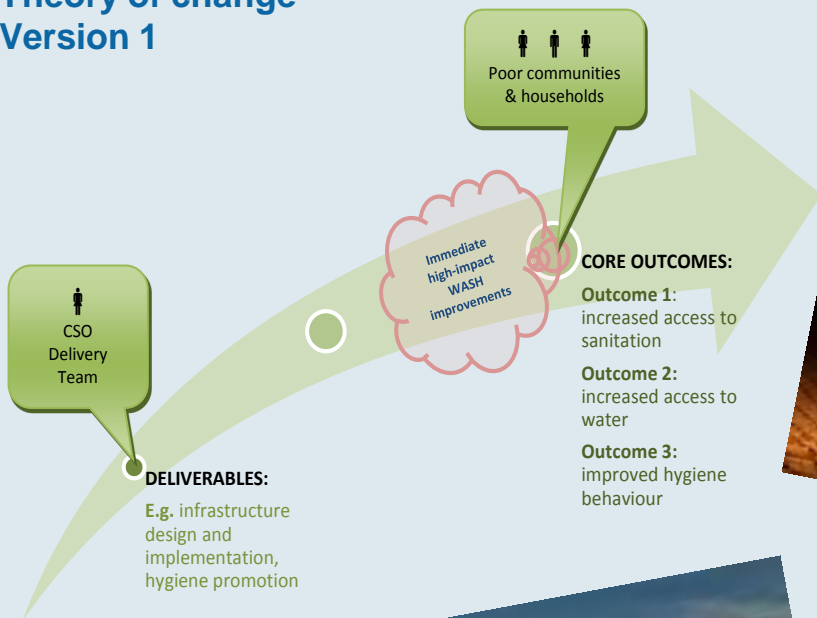


CIVIL SOCIETY

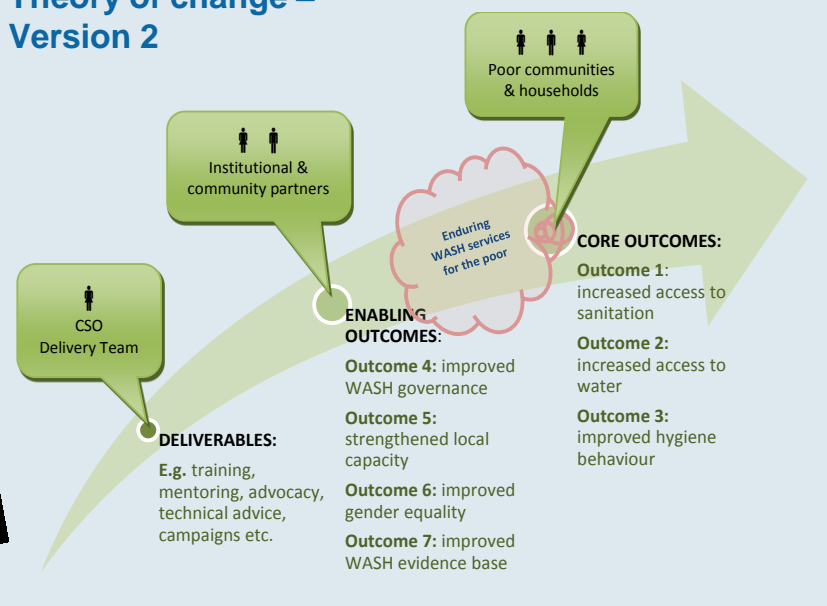
WATER, SANITATION AND HYGIENE FUND

MONITORING, EVALUATION + REVIEW PANEL

Theory of change – Version 1



Theory of change – Version 2

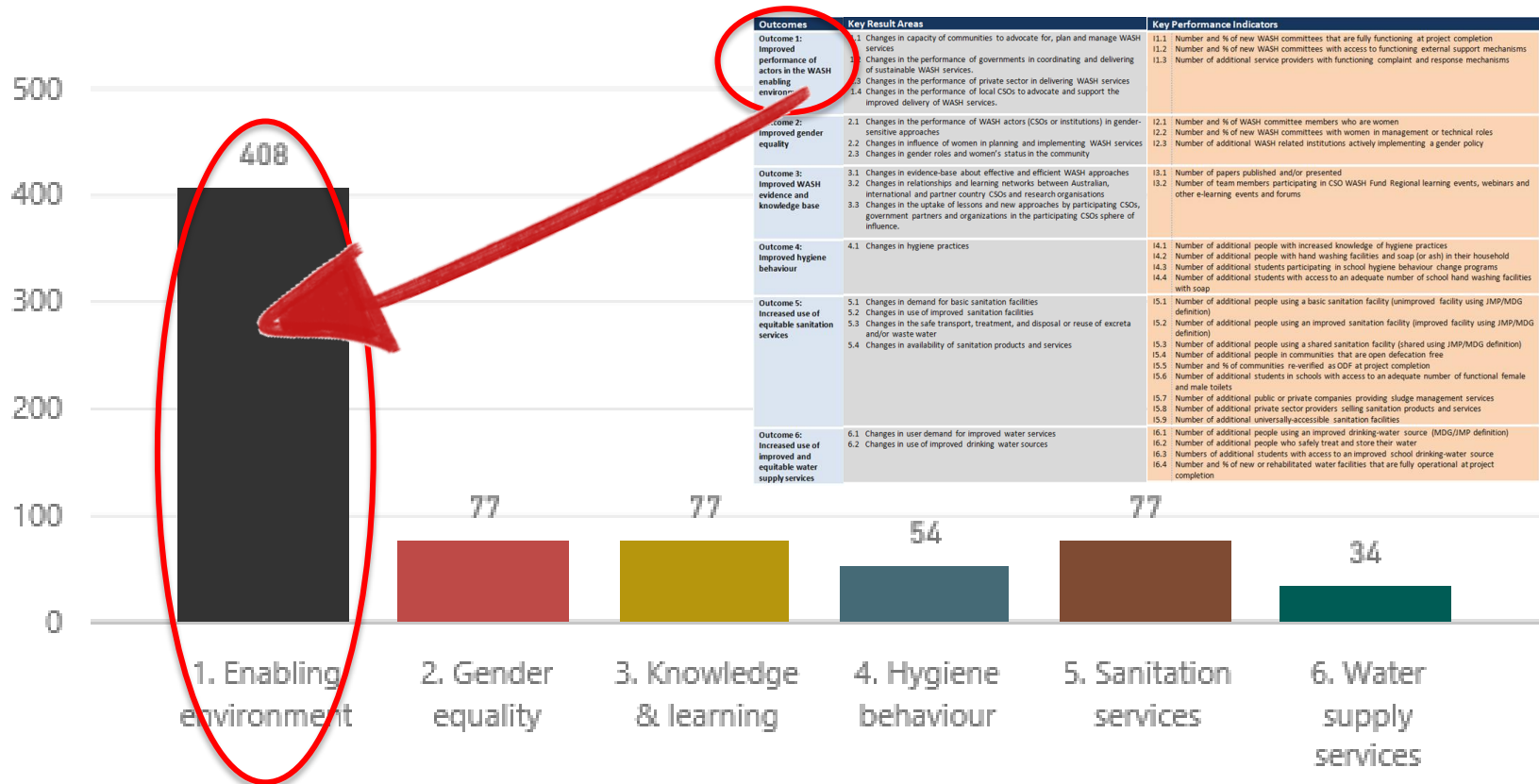


CIVIL SOCIETY

WATER, SANITATION AND HYGIENE FUND
MONITORING, EVALUATION + REVIEW PANEL

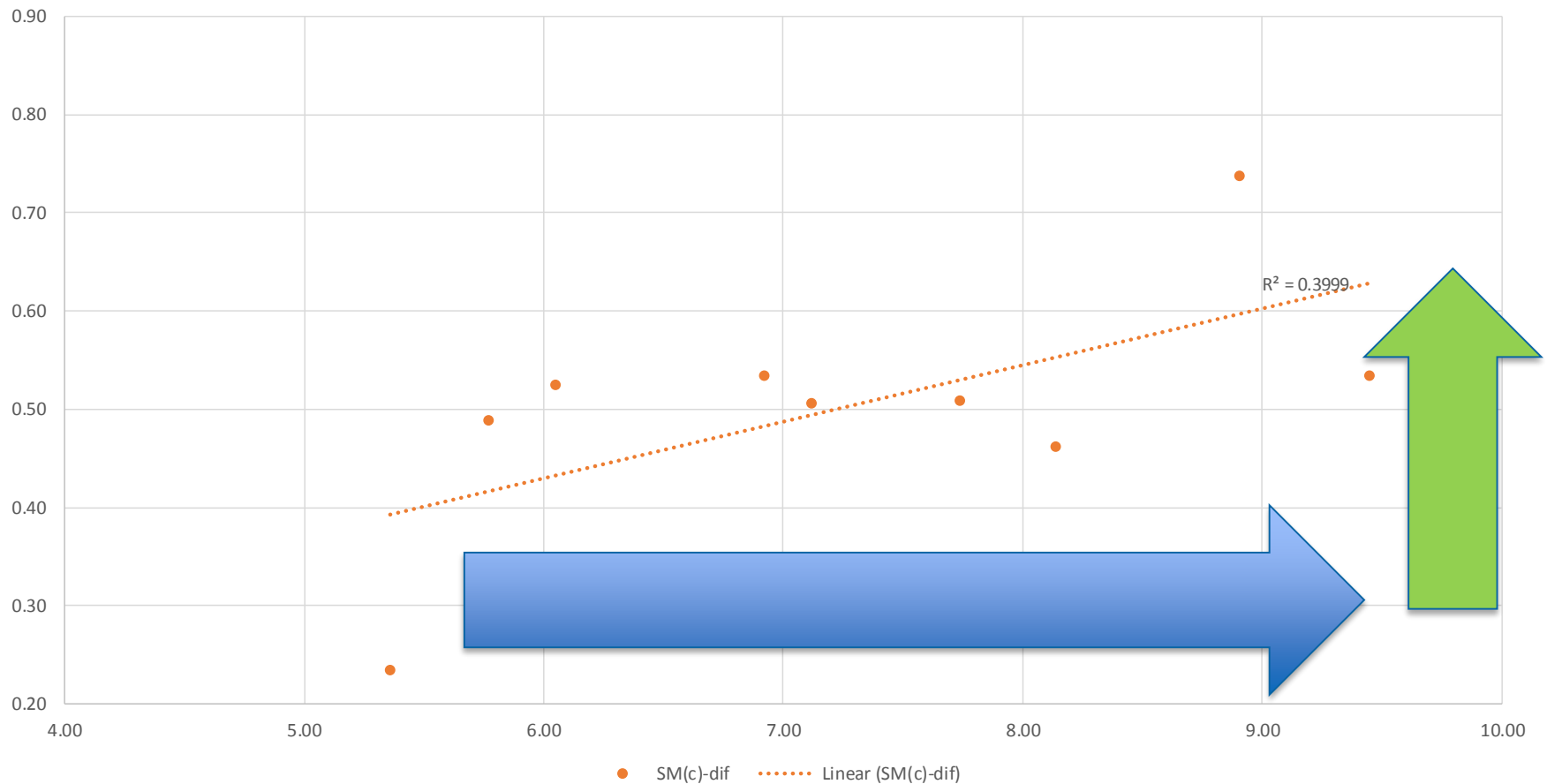
CS WASH Fund (Ver. 2.0)

Performance Assessment Framework



Is it the right way?

Strategy - Context vs Sustainability

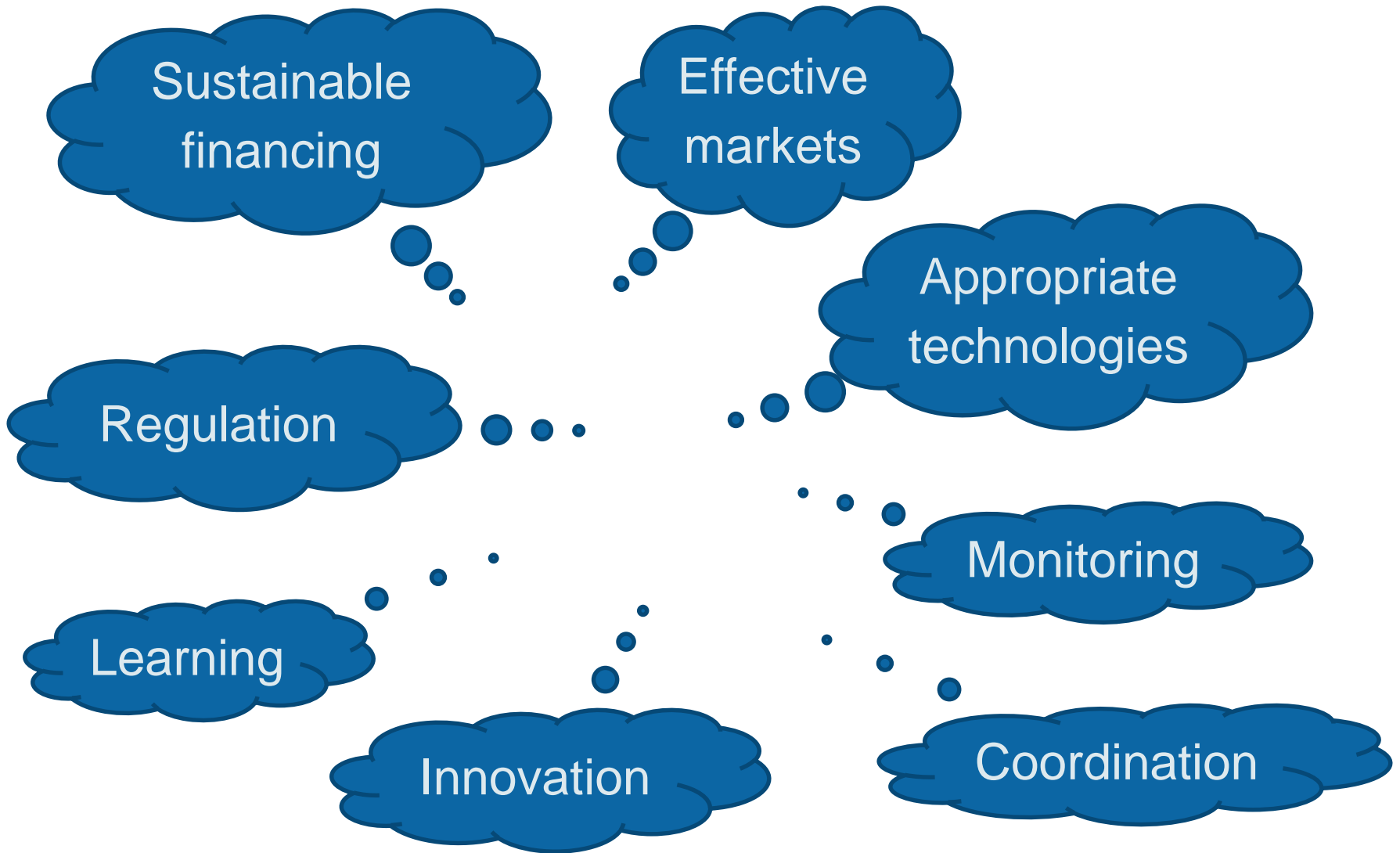


Enabling Environment Strengthening ???



CIVIL SOCIETY

WATER, SANITATION AND HYGIENE FUND
MONITORING, EVALUATION + REVIEW PANEL

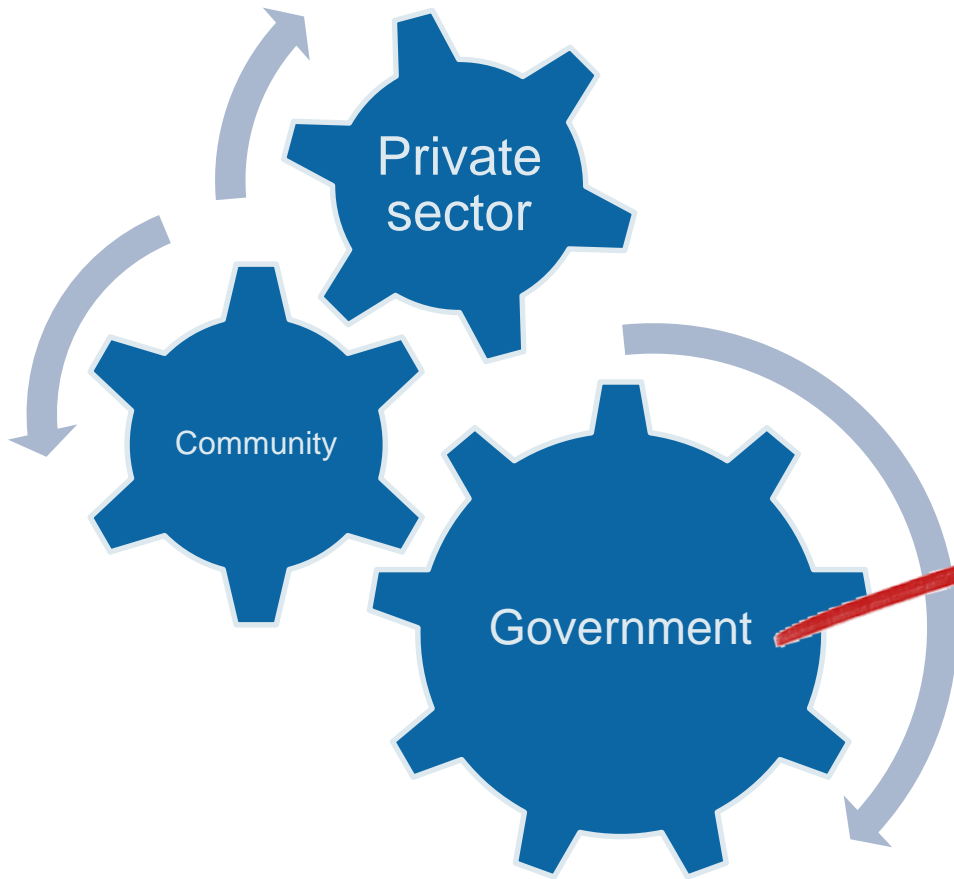


CIVIL SOCIETY

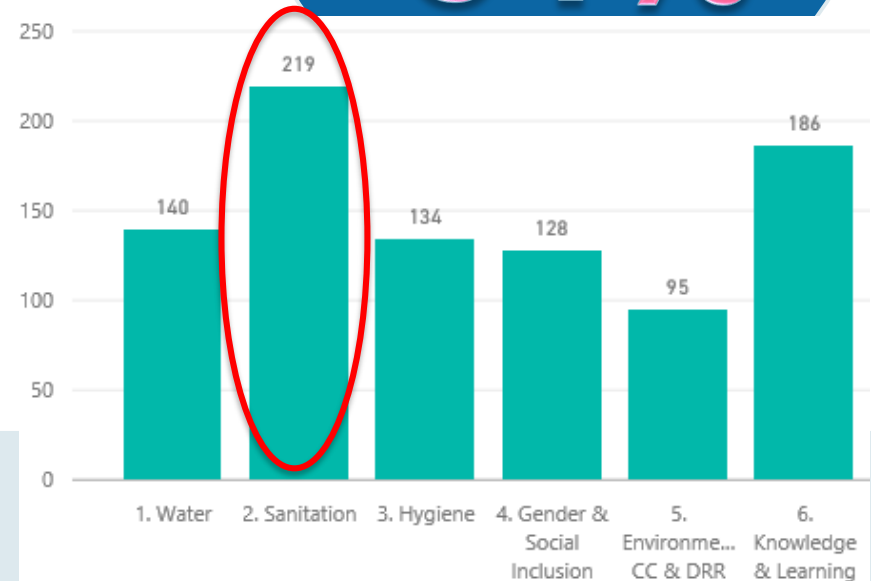
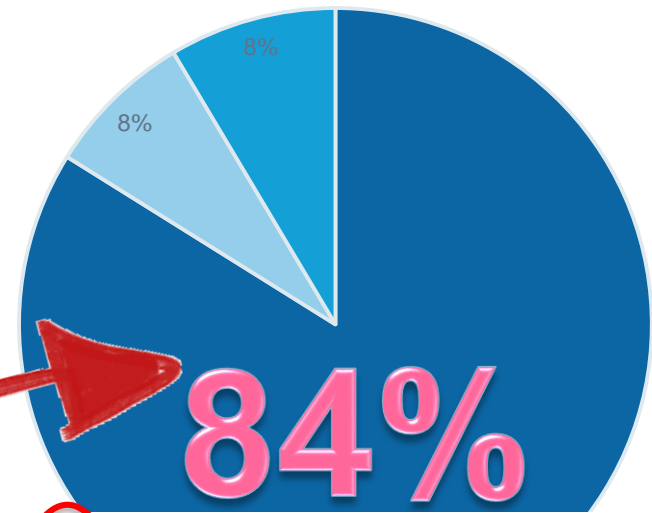
WATER, SANITATION AND HYGIENE FUND

MONITORING, EVALUATION + REVIEW PANEL

Who is the 'Enabling Environment'?



Change Agent Type

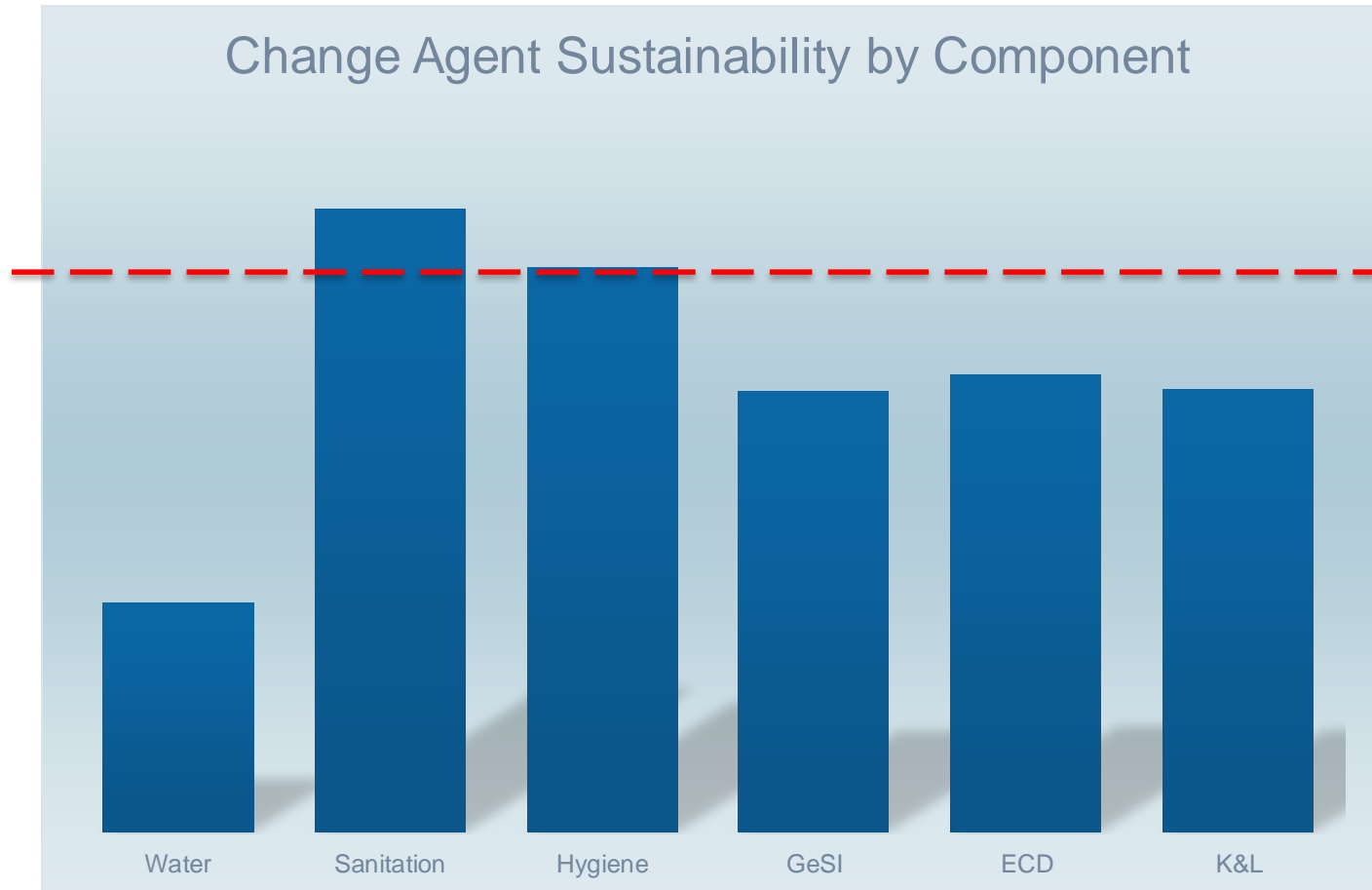


CIVIL SOCIETY

WATER, SANITATION AND HYGIENE FUND

MONITORING, EVALUATION + REVIEW PANEL

Which WASH strategy?

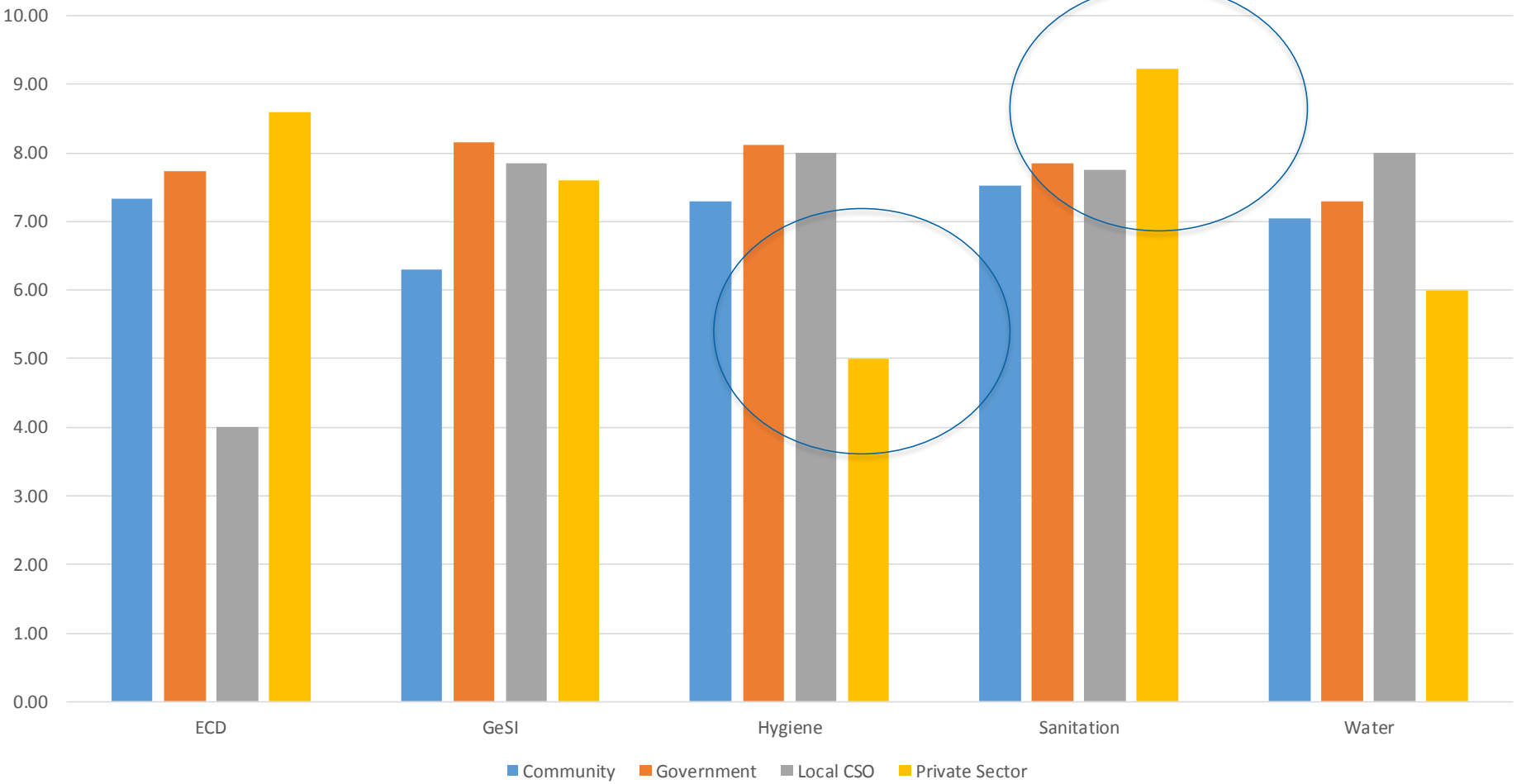


CIVIL SOCIETY

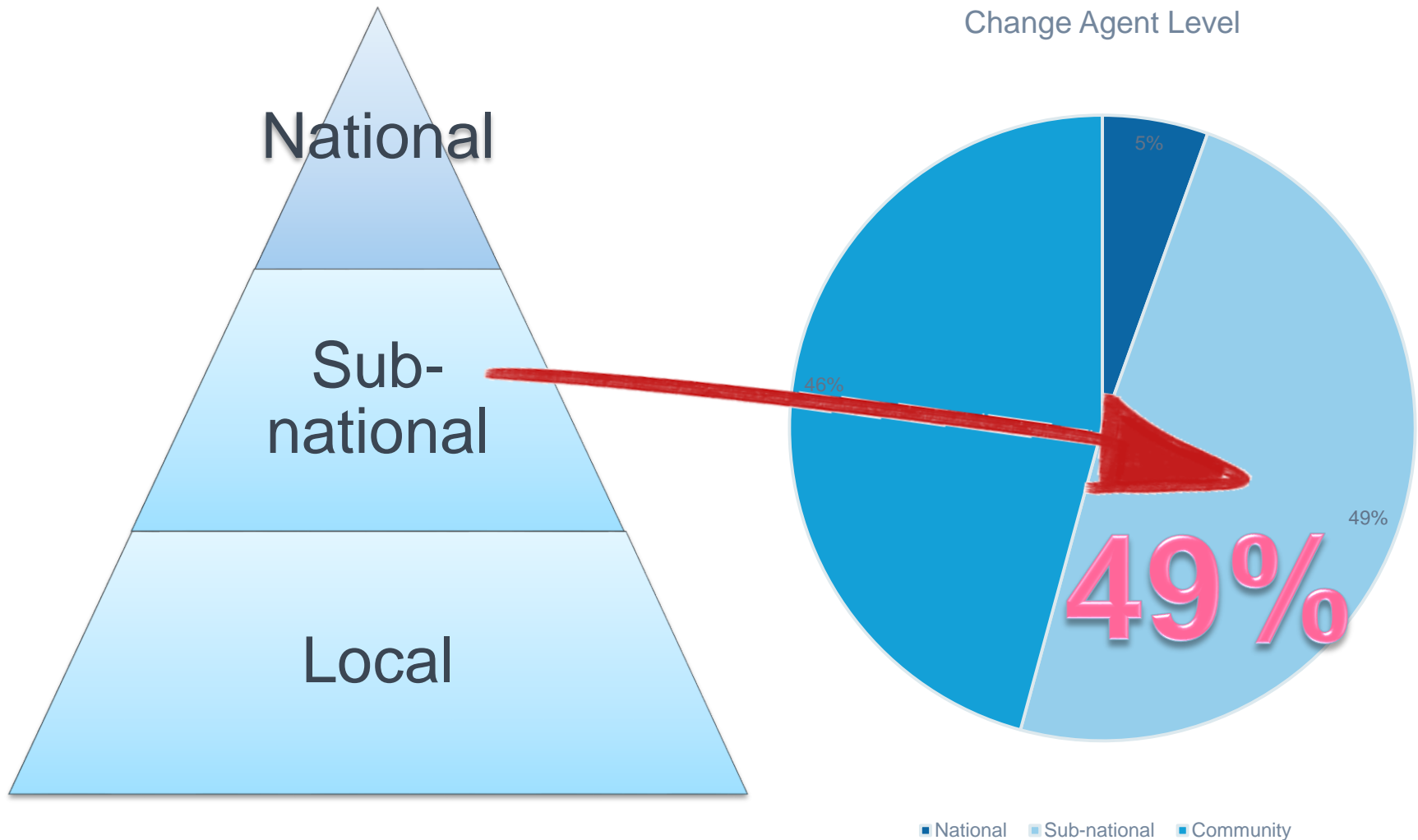
WATER, SANITATION AND HYGIENE FUND

MONITORING, EVALUATION + REVIEW PANEL

Sustainability of CA Performance by Type

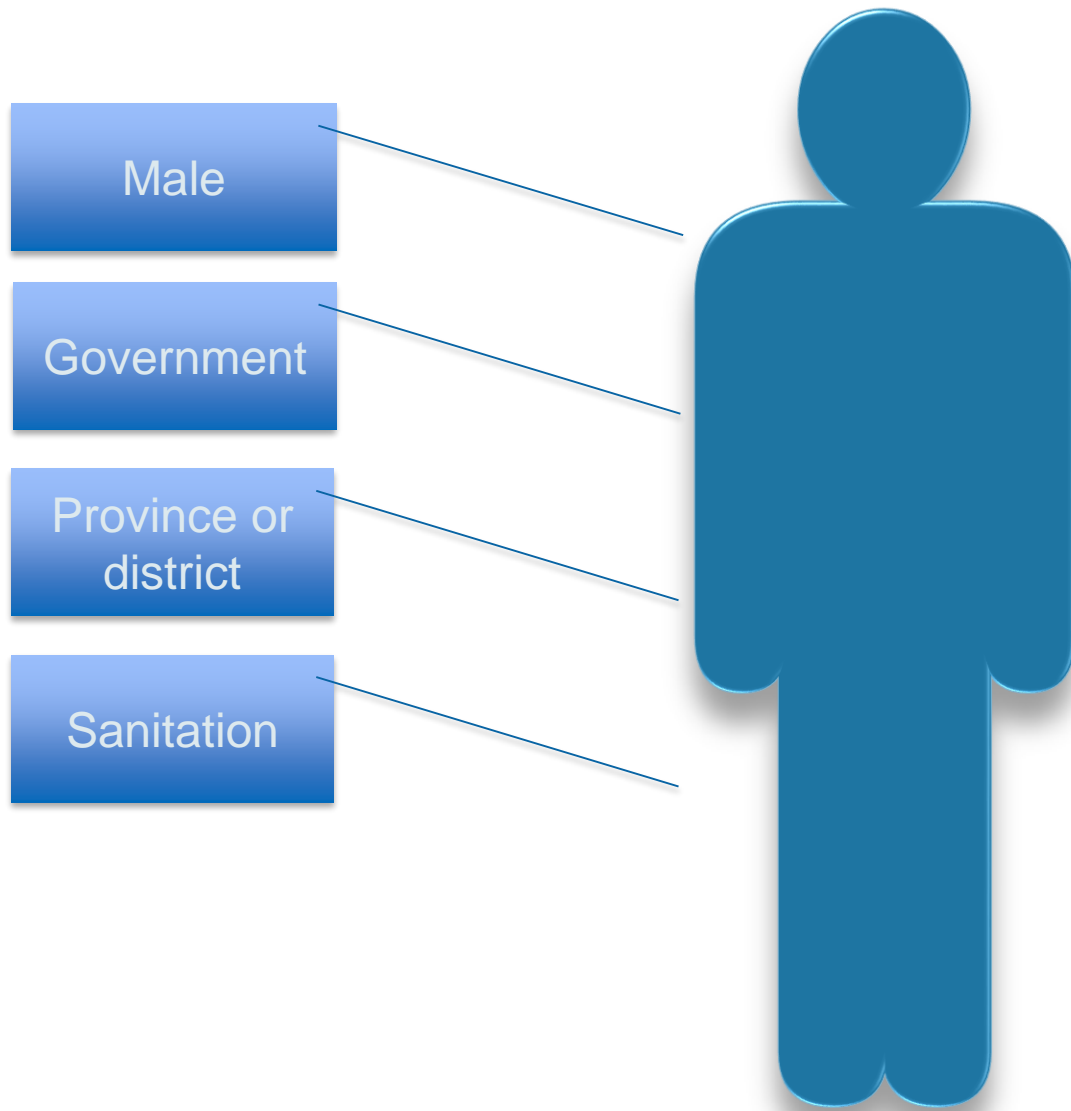


Where is the 'Enabling Environment'?



CIVIL SOCIETY

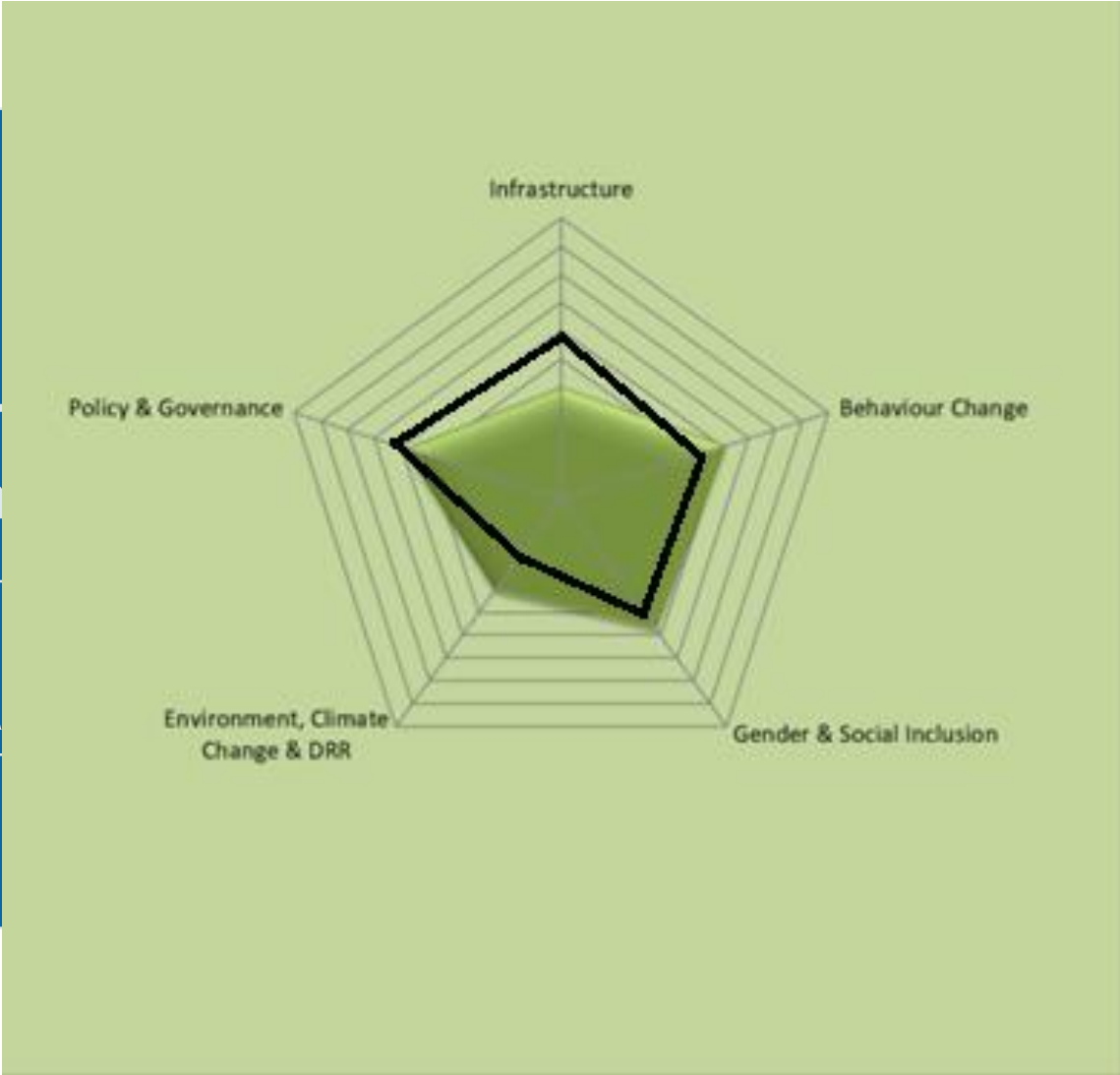
WATER, SANITATION AND HYGIENE FUND
MONITORING, EVALUATION + REVIEW PANEL



CIVIL SOCIETY

WATER, SANITATION AND HYGIENE FUND
MONITORING, EVALUATION + REVIEW PANEL

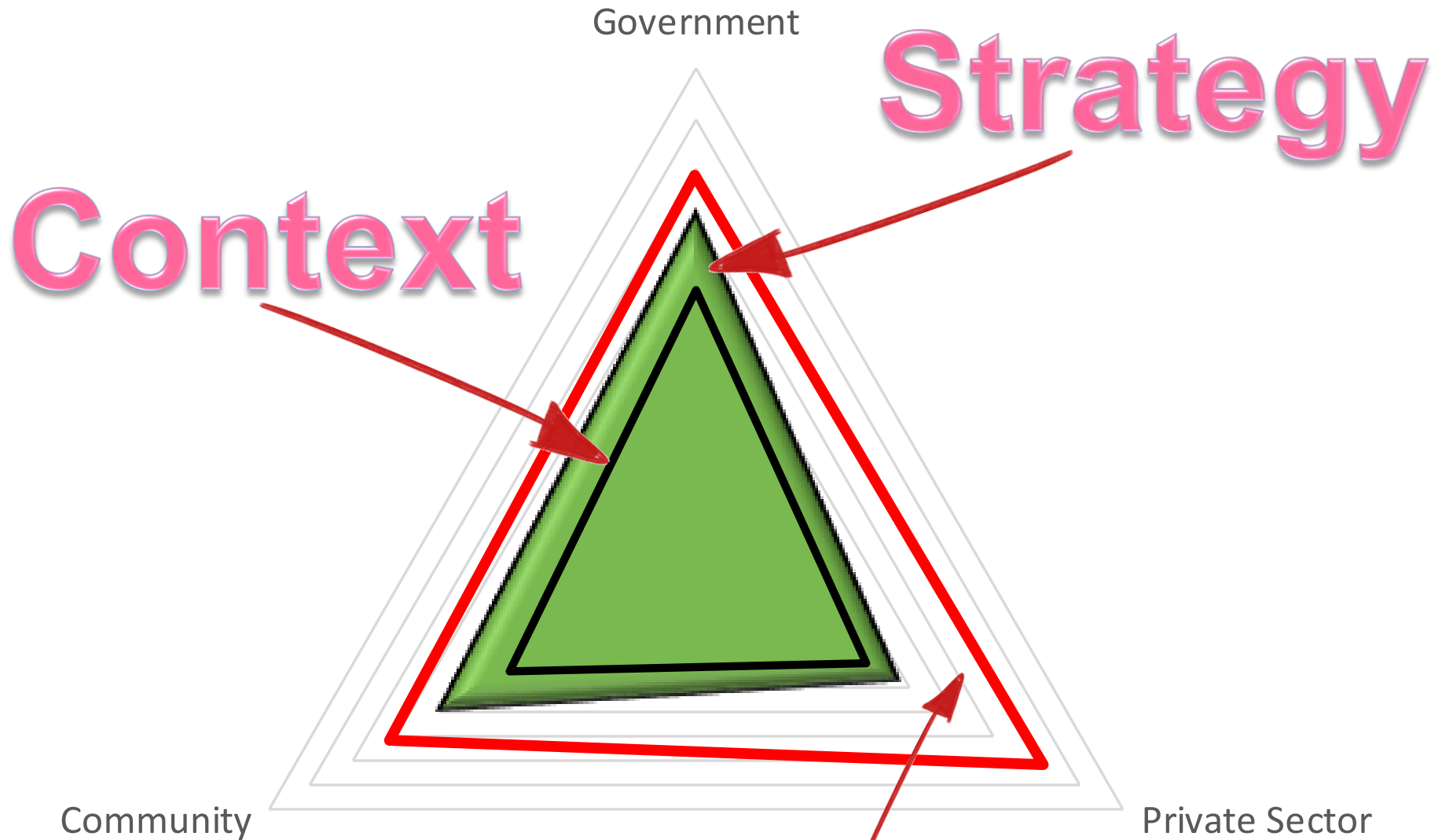
National
Sub-national
Local



Government
✓
✓
✗



Engagement with Enabling Environment



CIVIL SOCIETY

WATER, SANITATION AND HYGIENE FUND
MONITORING, EVALUATION + REVIEW PANEL

Sustainability

What does 'strengthening' involve?

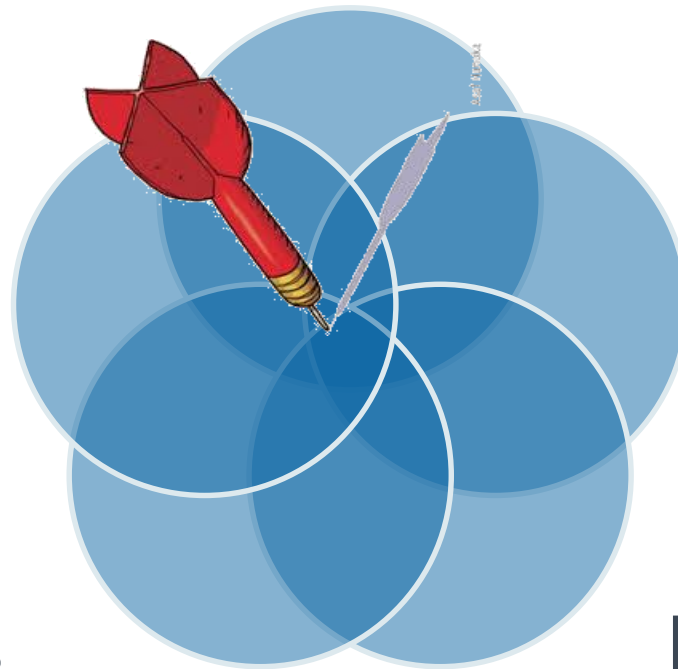
People

Resources

Skills

Systems

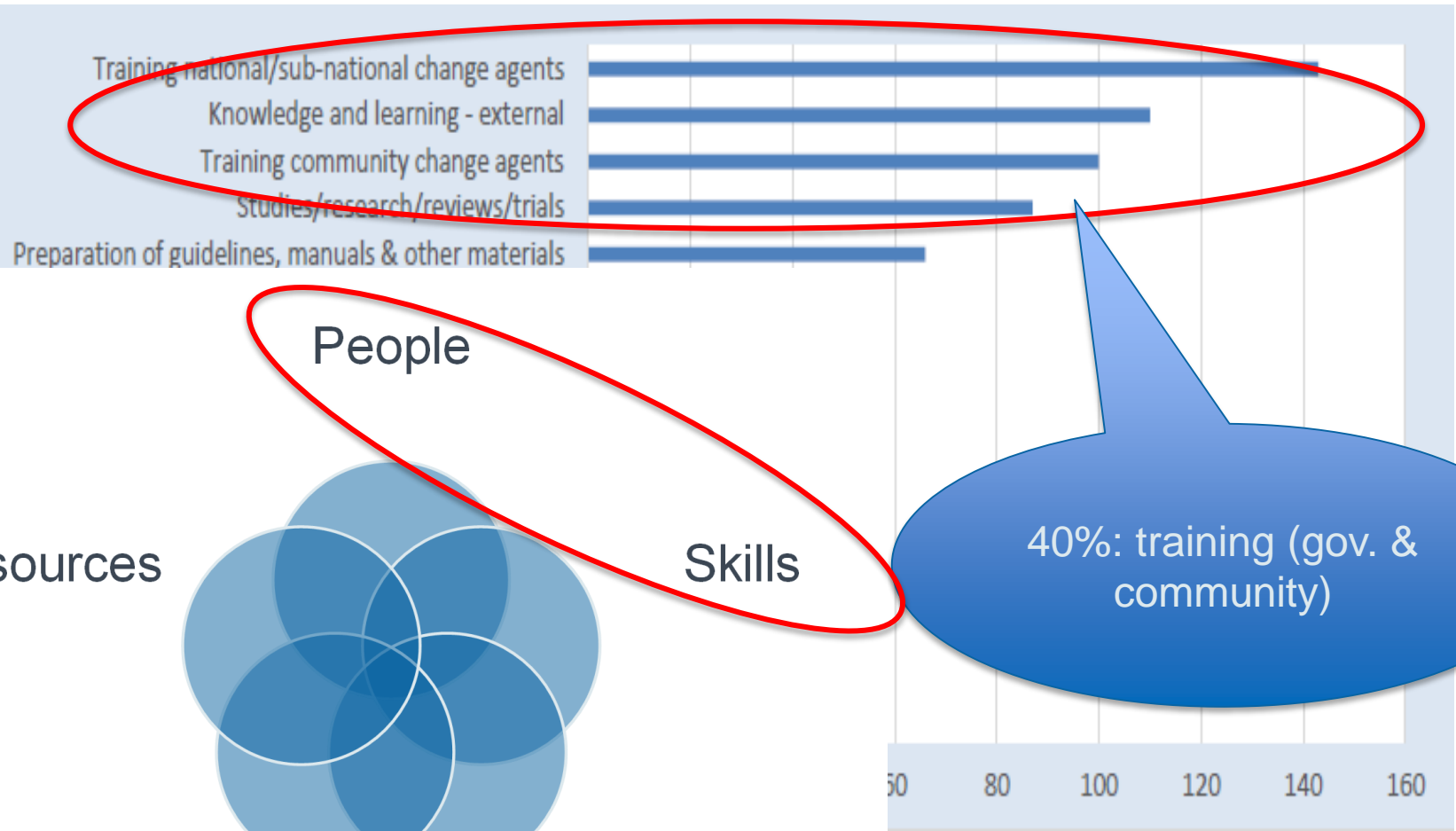
Motivation



CIVIL SOCIETY

WATER, SANITATION AND HYGIENE FUND

MONITORING, EVALUATION + REVIEW PANEL



Resources

People

Skills

40%: training (gov. & community)

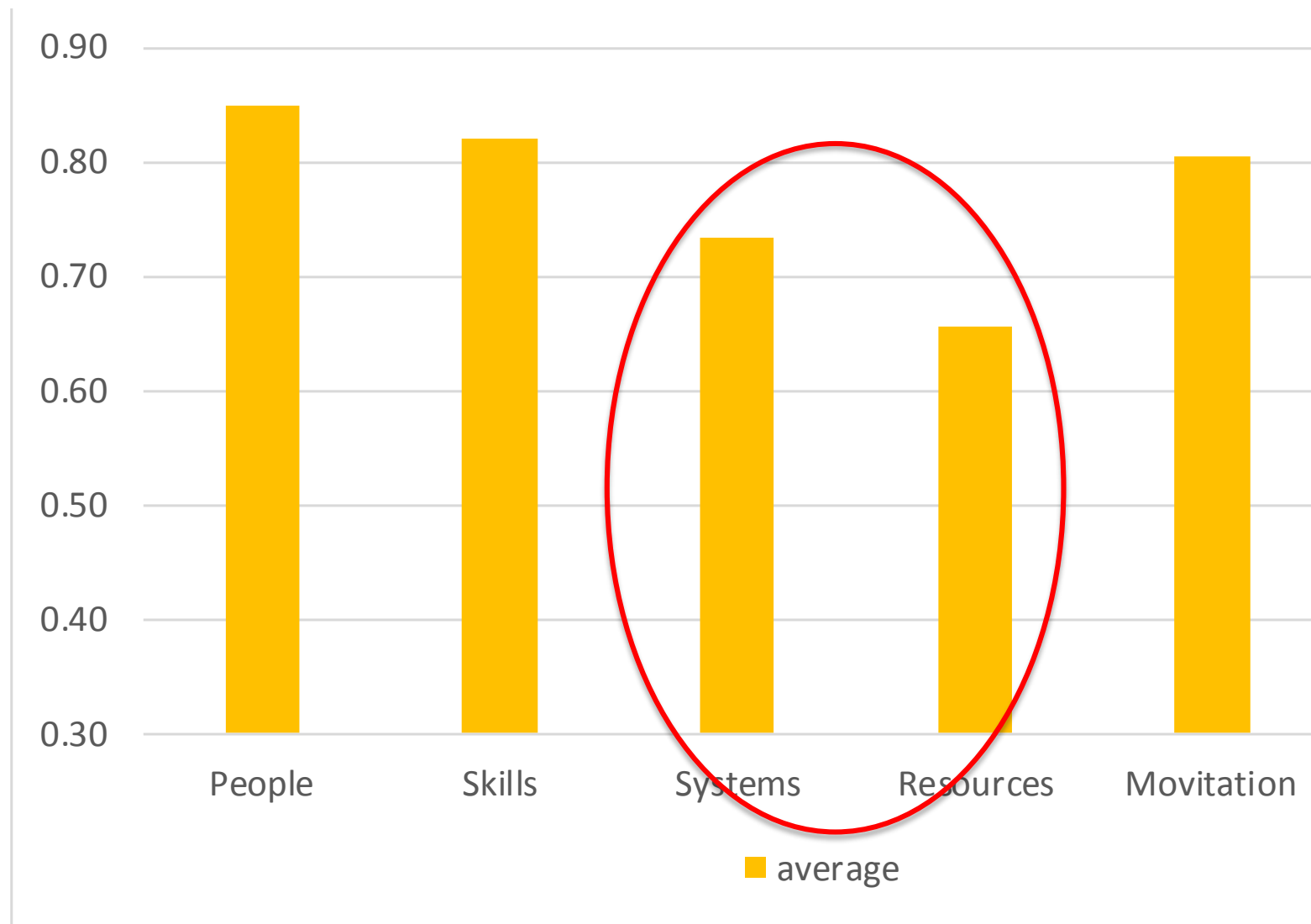
Systems

Motivation



CIVIL SOCIETY

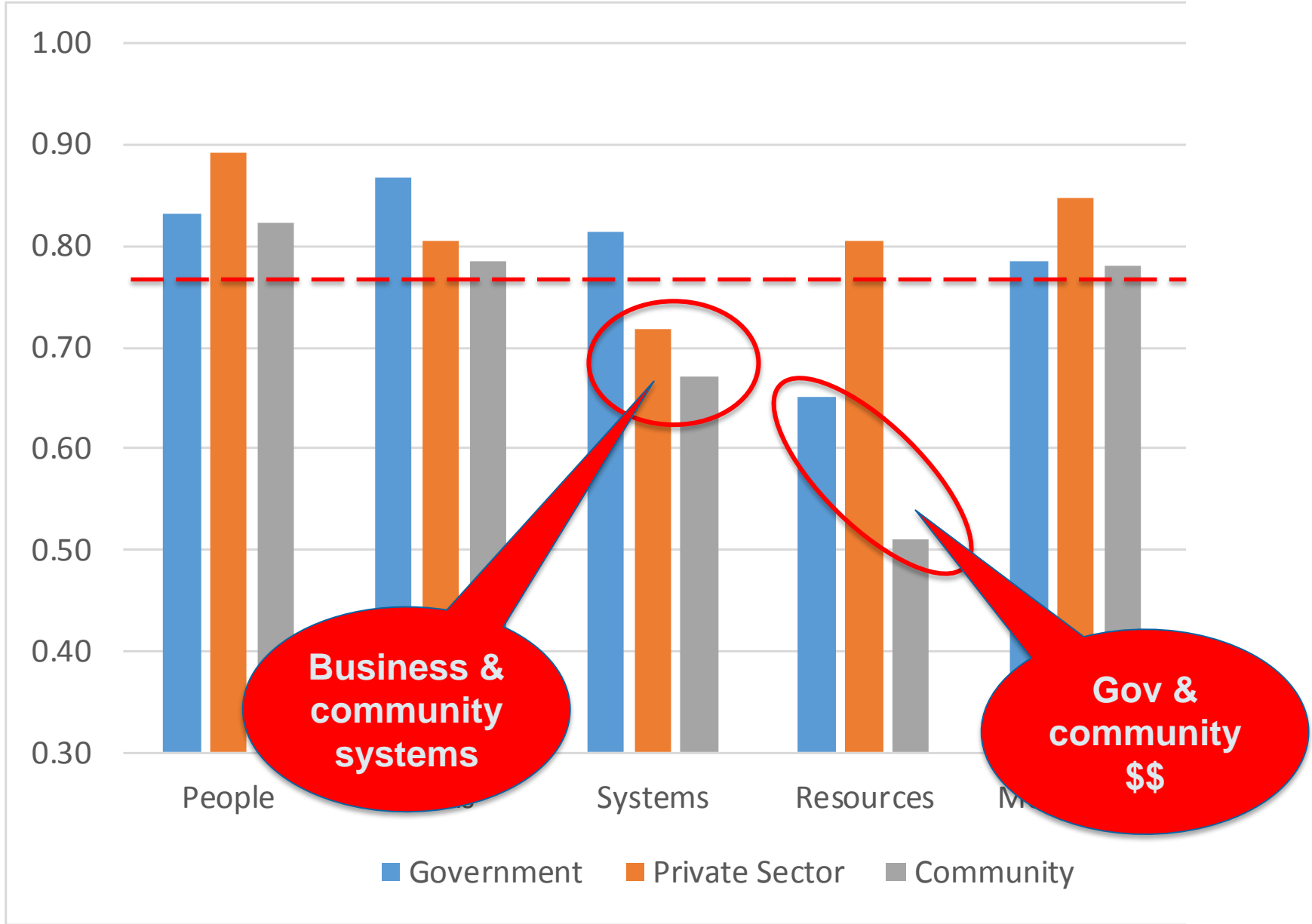
WATER, SANITATION AND HYGIENE FUND
MONITORING, EVALUATION + REVIEW PANEL



CIVIL SOCIETY

WATER, SANITATION AND HYGIENE FUND

MONITORING, EVALUATION + REVIEW PANEL



CIVIL SOCIETY

WATER, SANITATION AND HYGIENE FUND
MONITORING, EVALUATION + REVIEW PANEL

Reflections on the way forward...

Change Agents outside government?

National level?

Female Change Agents?

...especially private sector?

More sophisticated than training?

Tactical choices about WASH sub-sectors?

...especially resourcing and systems

WHO?

Private sector, community,
government?

WHERE?

Local, sub-national,
national?

WHAT?

Sanitation, hygiene,
water, GESI, ECD, K&L?

HOW?

People, skills, motivation,
systems, resources?



CIVIL SOCIETY

WATER, SANITATION AND HYGIENE FUND
MONITORING, EVALUATION + REVIEW PANEL

Sophisticated
Contextual analysis
Informed strategy
formulation
Systematic M&E



Strengthening the enabling environment: Fund-wide data & trends

MERP

Bruce Bailey | Paul Crawford | Paul Tyndale-Biscoe