



CIVIL SOCIETY  
WATER, SANITATION  
AND HYGIENE FUND



The CS WASH Fund is supported by the Australian Government and managed by Palladium International Pty Ltd.



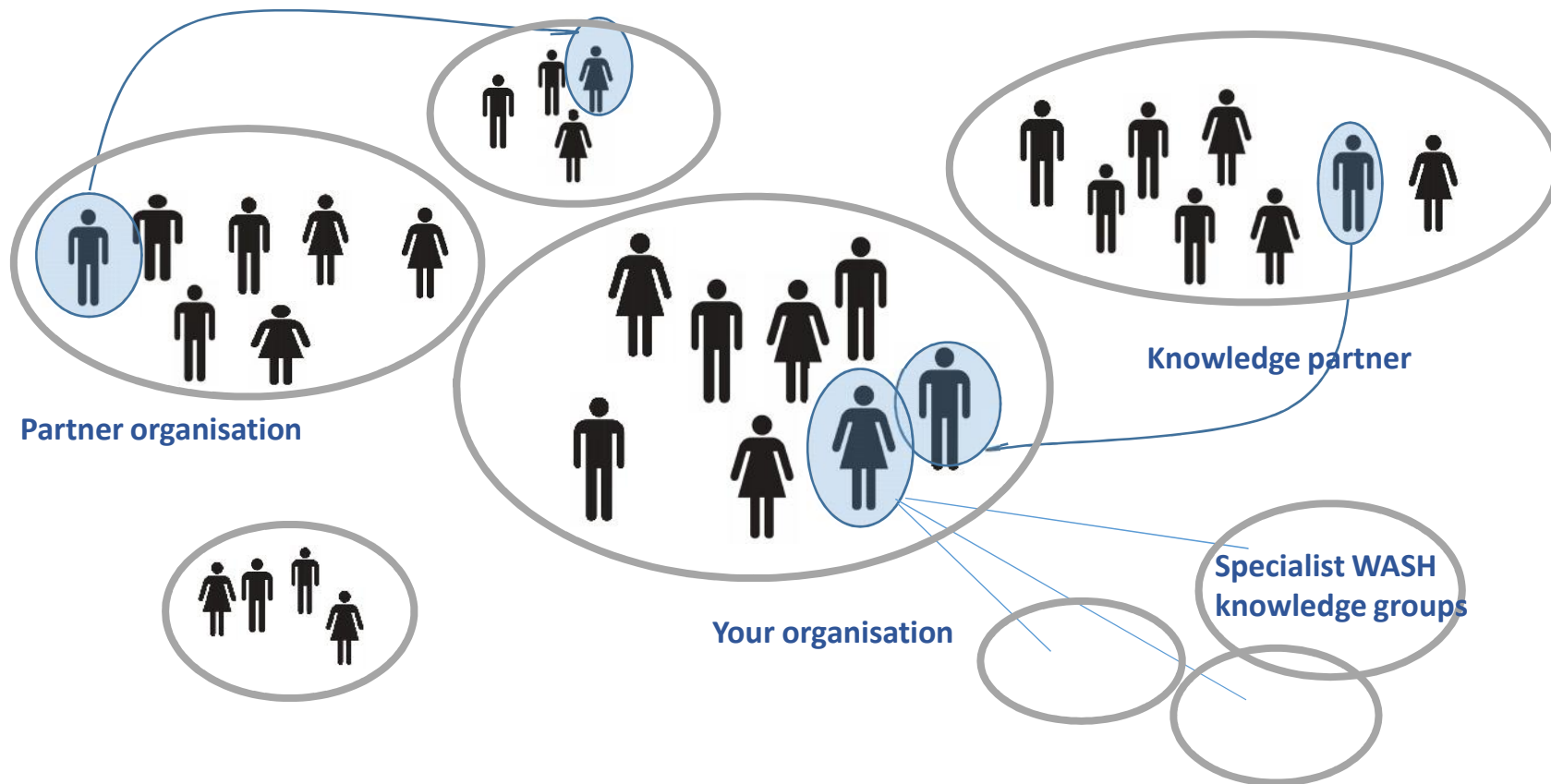
# An overview of Knowledge and Learning in the CS WASH Fund

Bronwyn Powell | 1 August 2017

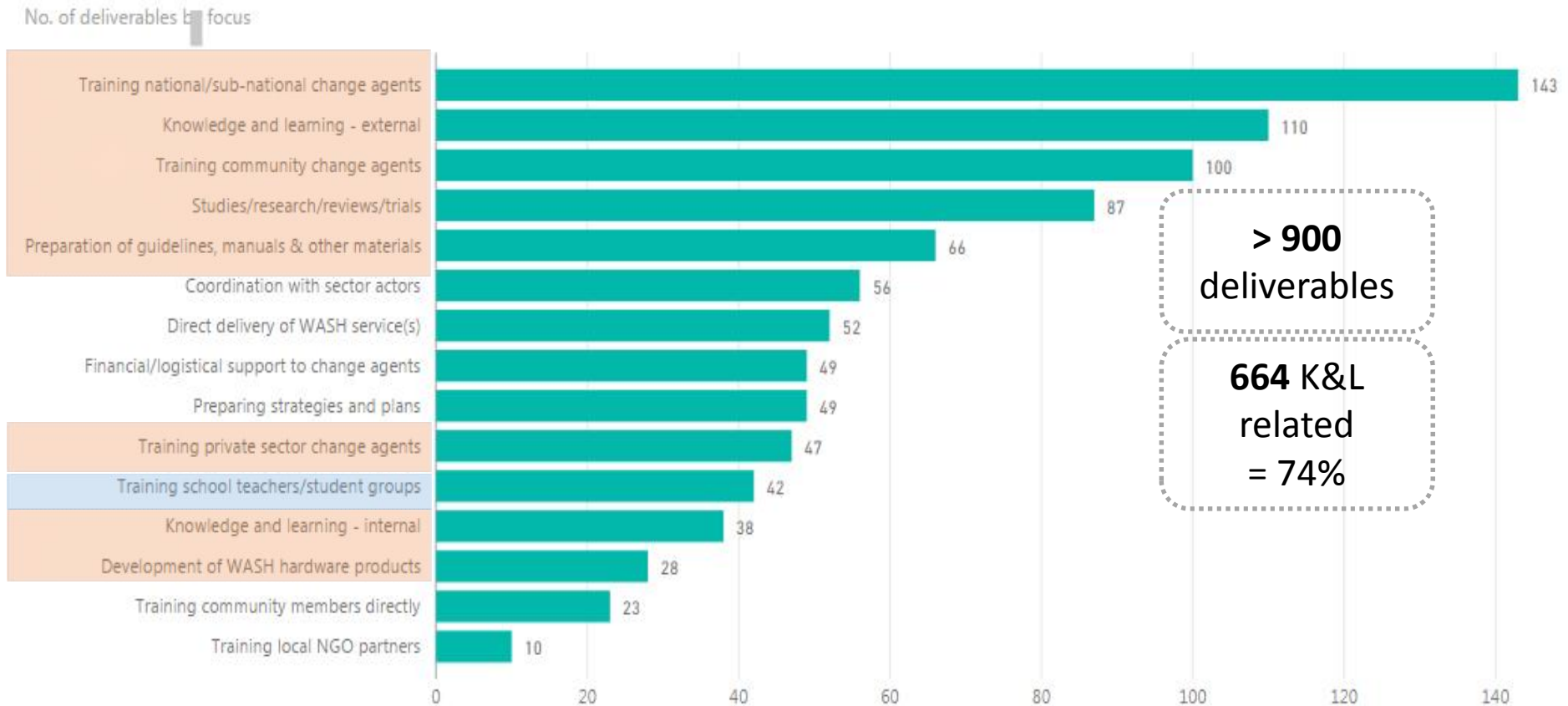


The CS WASH Fund is supported by the Australian Government and managed by Palladium International Pty Ltd.

# How do we as WASH practitioners interact, learn and improve?



# CSO activities: where does K&L appear?

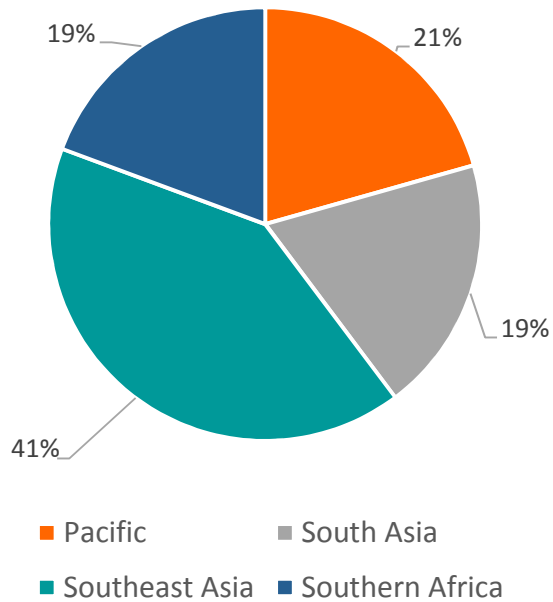


# What have CSOs done in K&L?

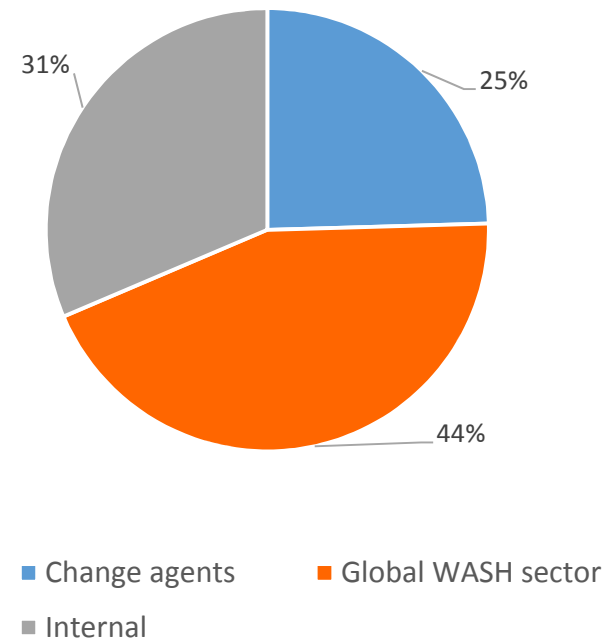
## CSO knowledge and learning outputs

**868:** total K&L outputs reported

CSO K&L outputs by region

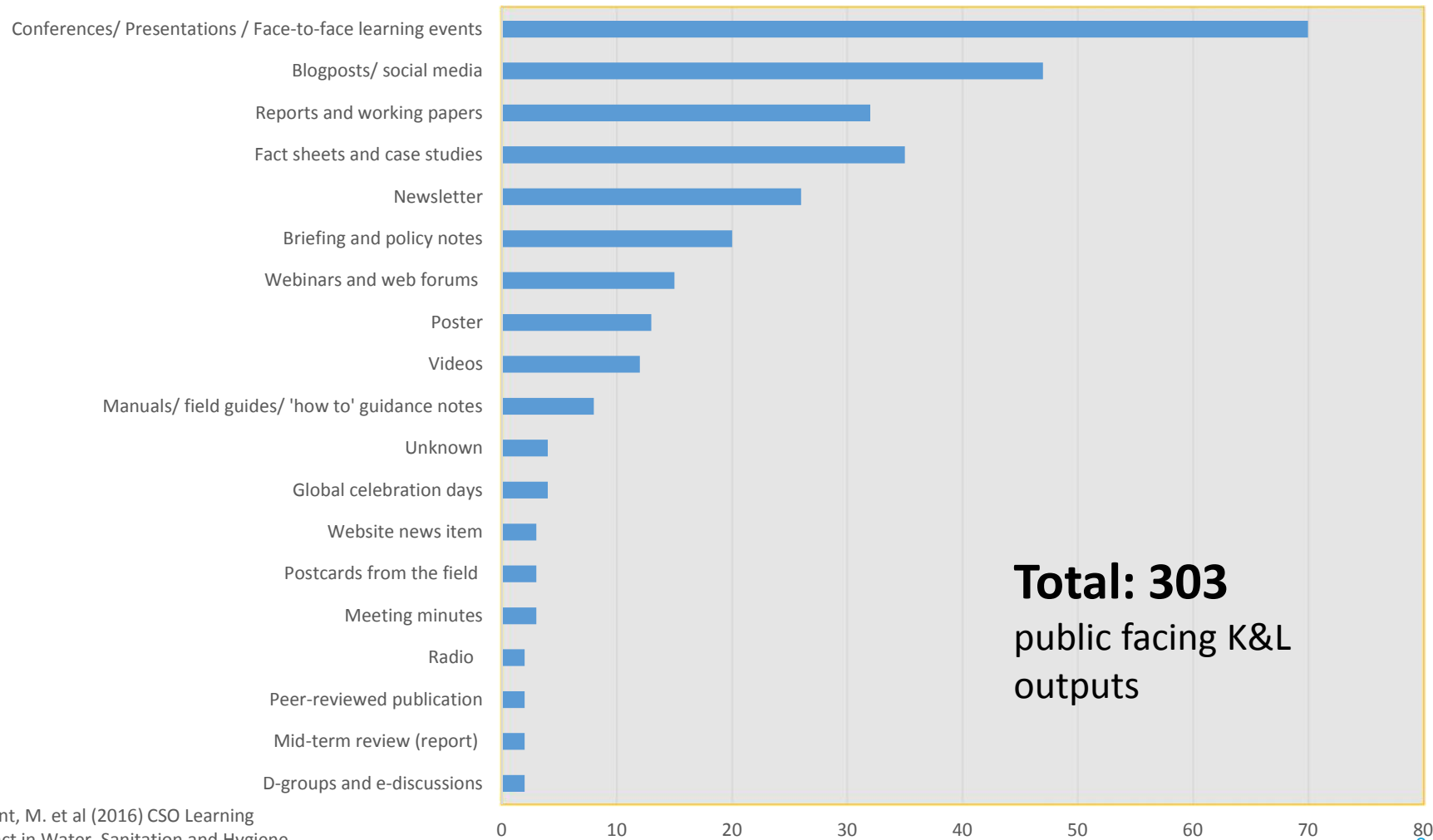


K&L output target audiences



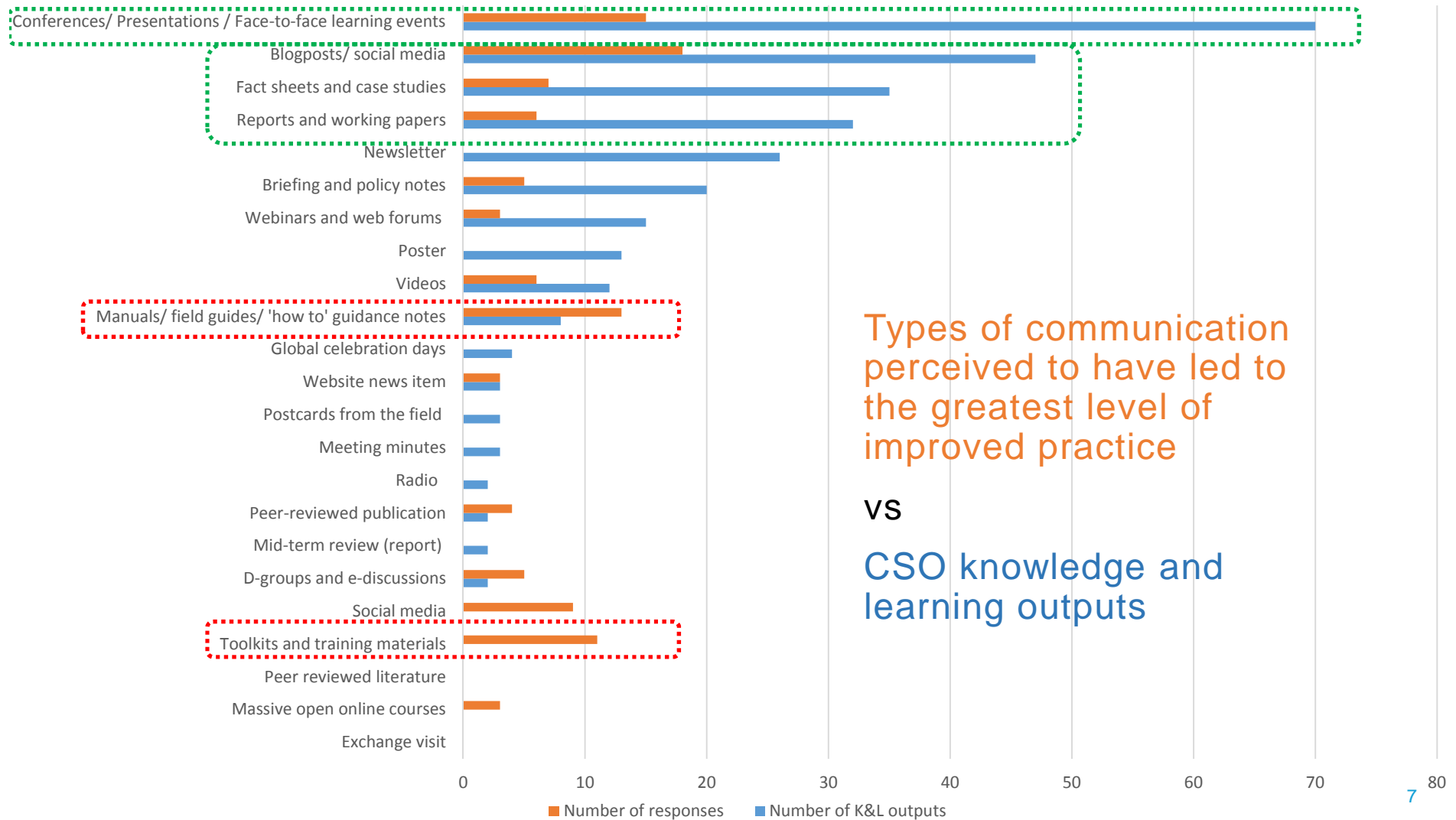
# What type of CSO K&L activity?

Public facing K&L outputs shared by CSOs (Jan 2016 - Jan 2017)



Ref: Grant, M. et al (2016) CSO Learning for Impact in Water, Sanitation and Hygiene Programming: Report for the CS WASH Fund.

# Is CSO K&L effort aligning where it makes a difference?



# Characteristics of good K&L products





# We have been guided by priority themes

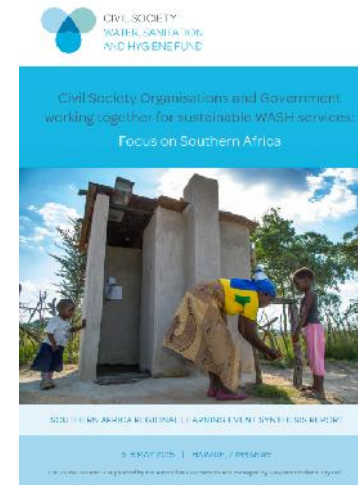
Our four themes

1. Strengthening the enabling environment

2. Gender and social inclusion

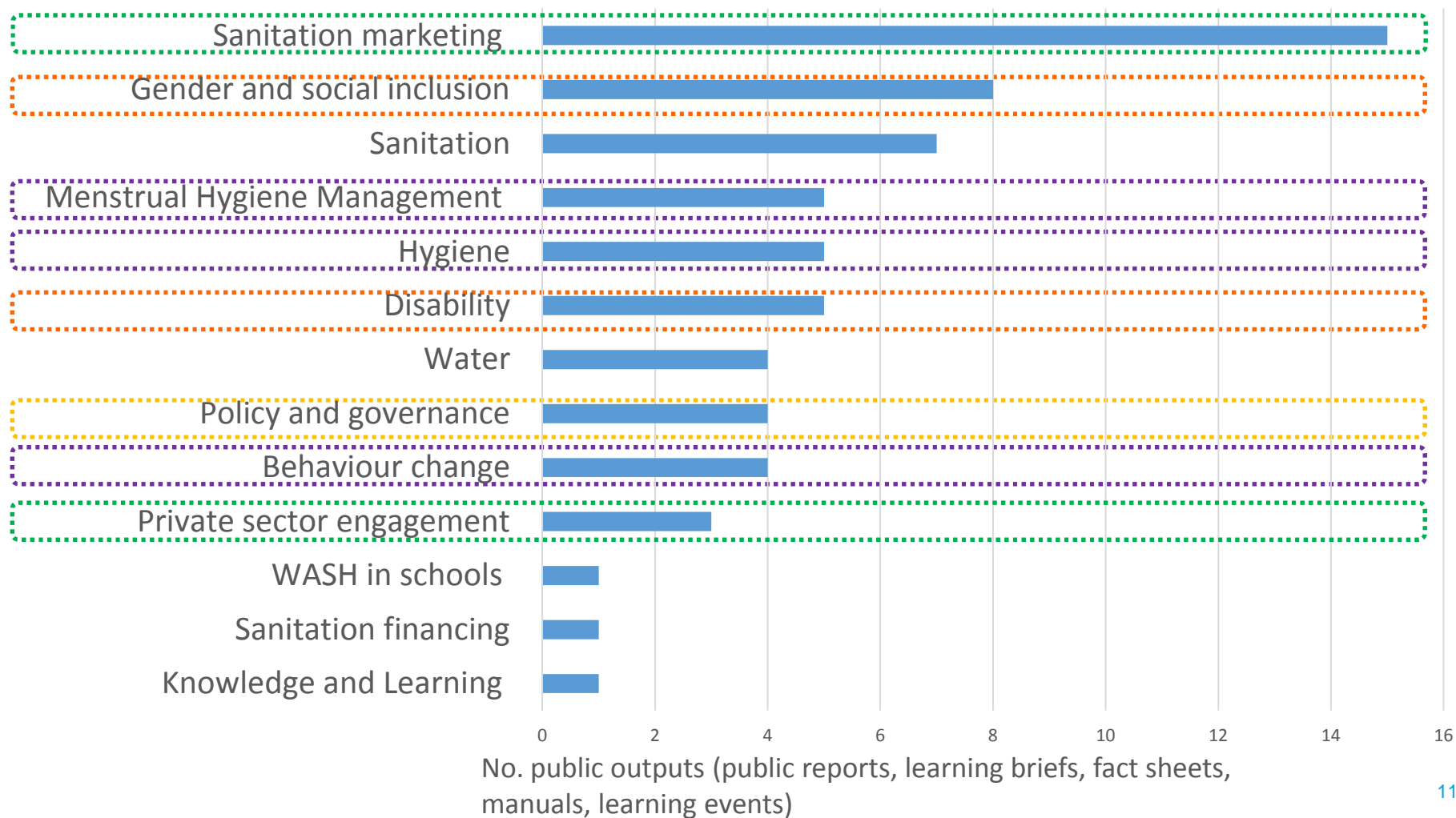
3. Hygiene behaviour change

4. WASH markets





# Thematic focus of public K&L outputs



# Fund-wide K&L

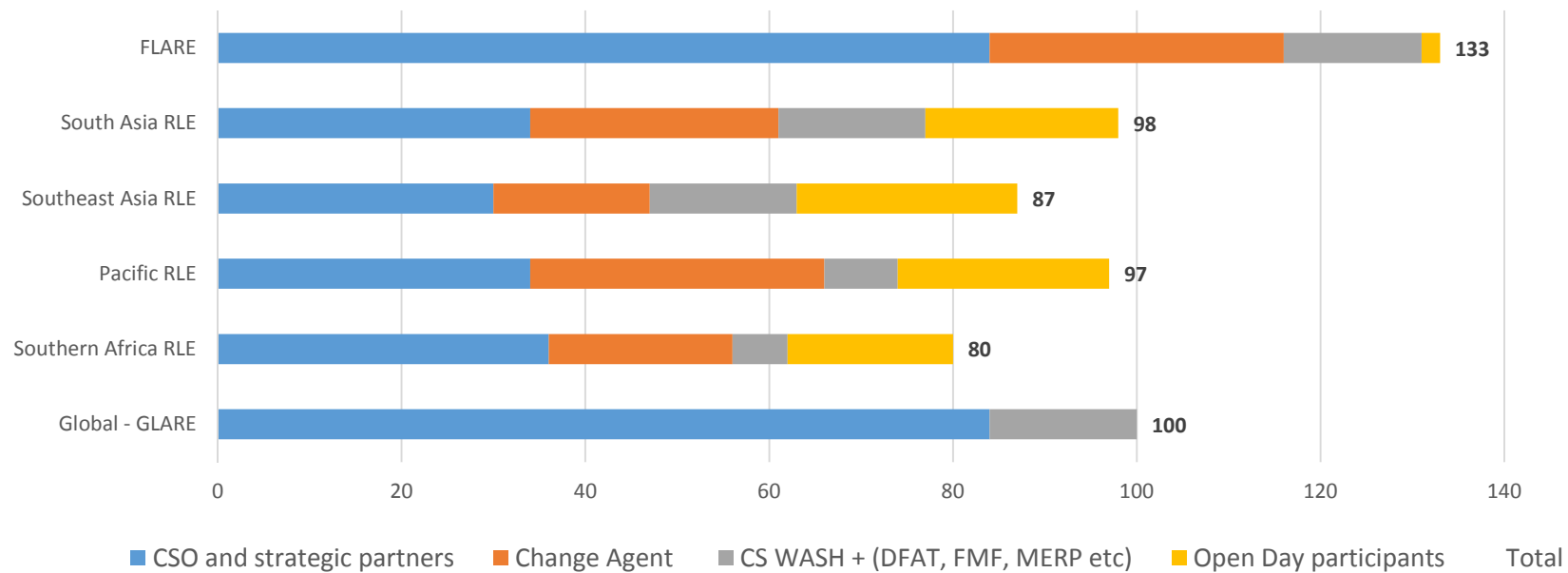
6 e-discussions and webinars

6 Learning events with **595** total participants

5 Synthesis reports

**11** Learning briefs

### Fund learning event participation







# Southern Africa

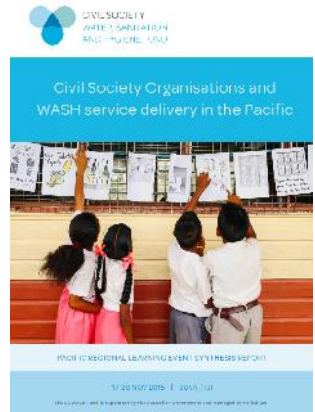


## VIRTUOUS CYCLE OF AID EFFECTIVENESS





# Pacific



LEARNING BRIEF

## Menstrual Hygiene Management

Learning Brief from the Pacific Regional Learning Event

Menstrual Hygiene Management (MIM), a key topic at the Pacific Regional Learning Event (PRLF) is a complex issue that is gaining more traction with WASH practitioners. It is essential for health, education, the environment, the economy

participation in all MIM sessions at the PRLF that MIM is an issue that is growing in interest for WASH practitioners, with many identifying a diverse range of taboos around menstruation across the Pacific, many of which inhibit women and

FAST FACTS

LEARNING BRIEF

## WASH Resilience and Climate Change

Learning Brief from the Pacific Regional Learning Event

There is ample evidence that highlights the unique vulnerability of Pacific Island Countries (PICs) to the impacts of climate change with high water tables, rising sea levels and increased likelihood of natural disasters<sup>1</sup> a topic of discussion at the

cycle, and adopting integrated water resource management principles to work with communities and other actors to identify vulnerabilities and manage risks, will assist to build WASH resilience.<sup>2</sup> The question of how this is borne out in

FAST FACTS

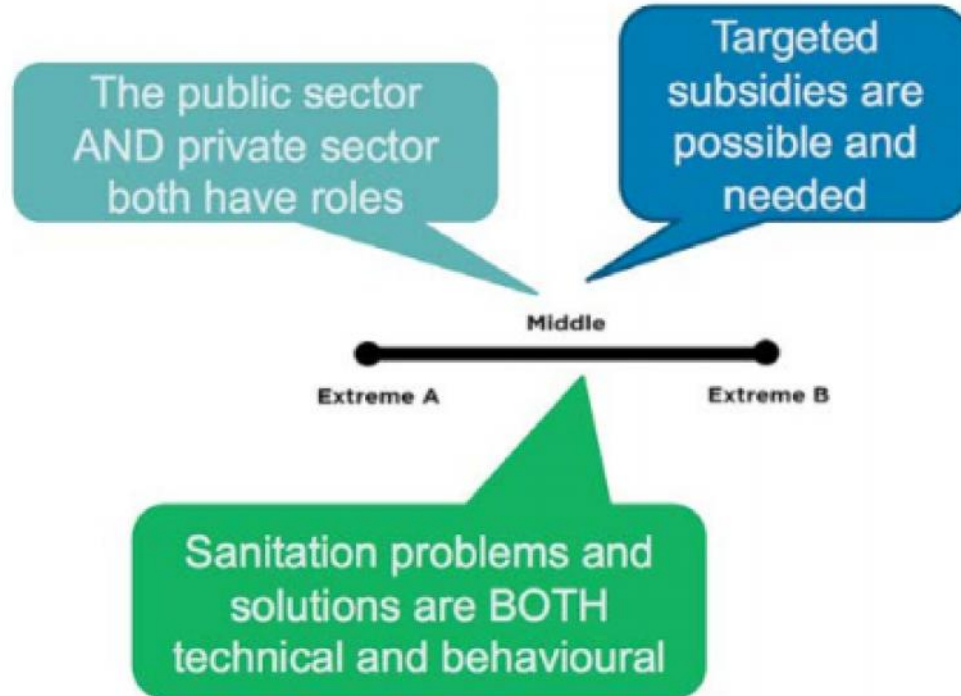
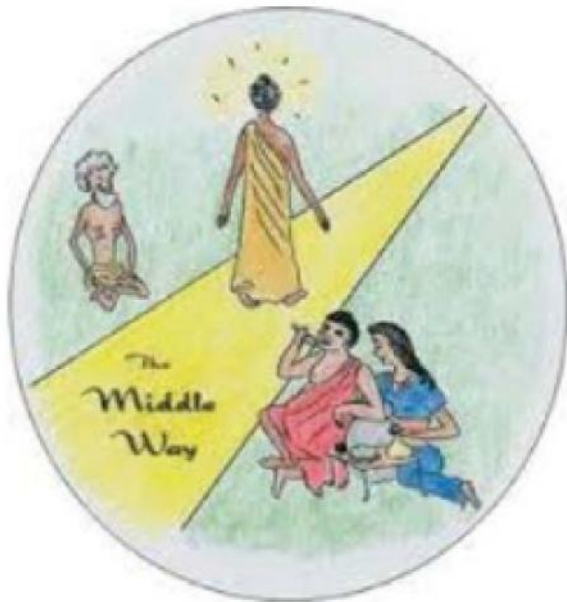




# Southeast Asia

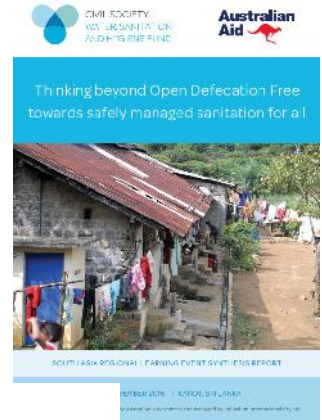


## 1. We need to take a middle path





# South Asia



## Thinking beyond the Finish Line



Ref: SNV (2016) Thinking Beyond the Finish Line: Sustainable Sanitation Services for All; Asia Regional Learning Event




# Research

## Formative research

## Partner with research organisations

Barriers and Facilitators to Hygienic Use and Maintenance of Latrines and Handwashing with Soap in Sariahi, Mahotari, Siraha and Septari Districts of the Terai, Nepal  
(December 2015)



Nga Orit Nguyen, Behavioral Change Communications Specialist, Consultant  
Linhphong Luong, Behavioral Change Communications Advisor for women's use

Australian Aid

SNV


Helti komuniti i save wok bung wantaim



TRUPLA MAMA  
and 2 More Friends

WaterAid  
Australian Aid  
WORLD BANK GROUP

Asia regional learning event  
Thinking Beyond the Finish Line: Sustainable Sanitation Services for All



March 14-17, 2016  
Phnom Penh, Cambodia

SNV  
IRC

## Research studies


The effect of OBA subsidies combined with sanitation marketing (SanMark) on latrine uptake among rural populations in Cambodia

R. Rivera, G. Joseph, S. Smets, V. Chan, P. Ljung, S. Um, H. Nguyen, and J. Albert

EAST MEETS WEST / THRIVE NETWORKS  
WORLD BANK WATER AND SANITATION PROGRAM

eastmeetswest  
WORLD BANK GROUP  
wsp

Optimizing smart subsidies to drive toward 100% market-led rural sanitation coverage in Cambodia  
Evidence from a randomized control trial




iDE

Australian Aid  
CAUSAL DESIGN

Chris Nicoletti & Alicia May / April 2015 - April 2017

ANALYSIS OF BASIC LATRINE SURVIVAL DURING HEAVY RAINS: THE CASE OF MULANJE DISTRICT  
MAY 2015

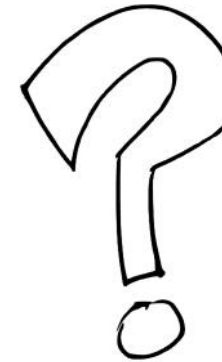


Plan Malawi Malawi Program Area  
PO Box 555, Malawi  
COMPILED BY: Catherine Kapigi

Australian Aid  
PLAN



- CSO view that Fund-wide K&L improving projects
- Role of CSO and Fund-wide M&E to support and reinforce learning
- CSO engagement in setting K&L agenda
- Sufficient timeframe



- Increase direct peer-to-peer exchange
- Variable quality of K&L products
- Translating learning into practice
- Manuals and how to guides
- Resourcing and culture matters
- Effectiveness of WASH approaches?

# Thank you



**#CSWASHFund**

**#FLAREBrisbane**

**#AustralianAid**

**[www.cswashfund.org](http://www.cswashfund.org)**

# Section title slide

Section Subtitle



CIVIL SOCIETY  
WATER, SANITATION  
AND HYGIENE FUND



# Innovation in the CS WASH Fund

Innovation and Impact Grants and more

Bronwyn Powell | 1 August 2017



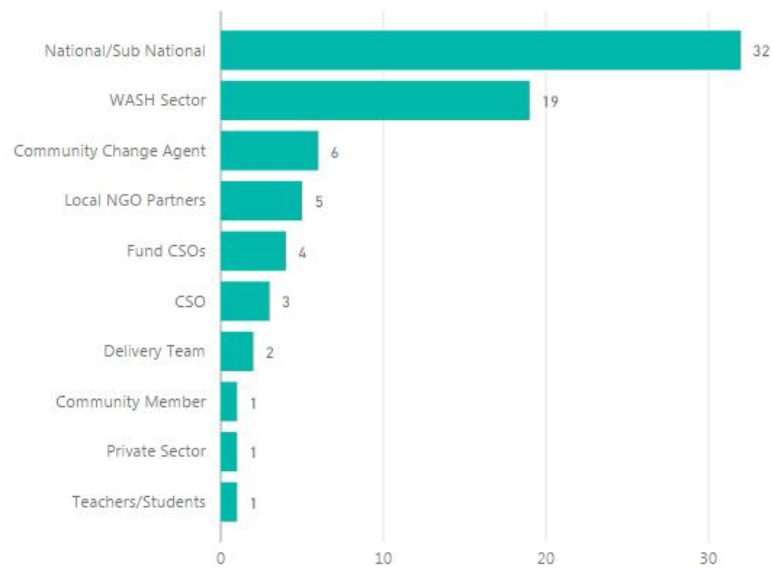
The CS WASH Fund is supported by the Australian Government and managed by Palladium International Pty Ltd.

# What have we learnt?

Research partnerships are valuable and have led to strong outputs

# Innovation cycle diagram

No. K&L expected changes by main audience\*



No. of K&L expected changes by focus\*

